



FITMENT INSTRUCTIONS

ModCap Under-Bed Molle

Installation Instructions

Installation and fitment instructions includes the tools required, fasteners included in the kit, and the hardware included in the kit.

Please follow the instructions and check installation steps with the images in this document.

Alu-Cab recommends that all sealing work is allowed to cure for 24 hours, after which you may drive the vehicle on normal paved roads. Before driving off-road with your Alu-Cab product or operating your roof conversion, an additional cure period of 48 hours is required.

Failure to follow these instructions will void your warranty. Please ensure that you follow the sealant manufacturers curing time as per their technical data sheet.

These times may differ slightly from the times we have recommended.

Service Enquiries email
queries@alu-cab.com



Installation Instructions

ModCap Under-bed Molle

1

How to install the ModCap Under-bed Molle

When mounting the Underbed Molle (**CC-A-MP-BED-P001**) to the bed section, it is necessary for the standard gas struts to be replaced with the supplied gas struts. There are two brackets, one on each side of the base to be used as a backing plate and stiffen the mounting of the new gas struts.

The main items required for this guide are:

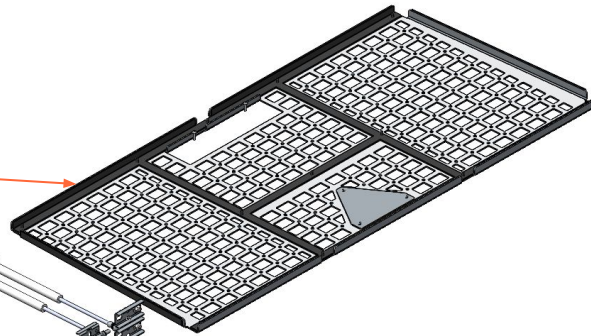
CC BO UNDERBED MOLLE PLATE

GAS STAYS -4043-350LG - 750N

UNDERBED MOLLE - BED SECTION REINFORCEMENT BRACKET

UNDERBED MOLLE SHOCK BACKING PLATE

CC BO TENT (BOTTOM VIEW)



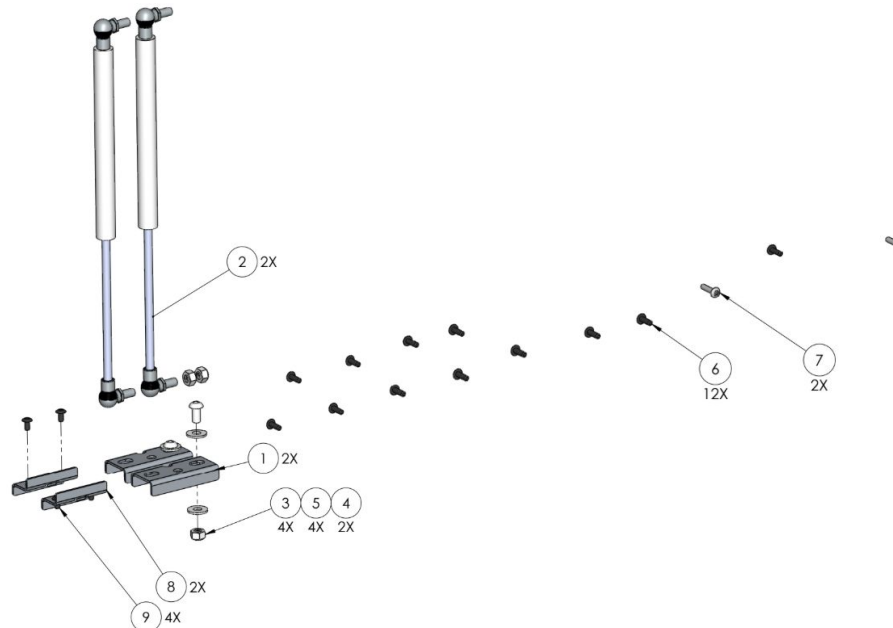
Installation Instructions

ModCap Under-bed Molle

1.1

Tools & Items Required

| |
|--------------------------|
| Rivet gun |
| 13mm Ring Spanner/Socket |
| 5mm Allen Key |
| 5mm Drill bit |
| Drill |



1.2

Fasteners and Brackets Supplied per set

| ITEM NO. | PART NUMBER | Revision | DESCRIPTION | QTY |
|----------|------------------|----------|---|-----|
| 1 | CC-A-MP-BED-P003 | 00 | UNDERBED MOLLE SHOCK BACKING PLATE | 2 |
| 2 | GS-350-750N-UBM | | GAS STAYS - 350LG - 750N | 2 |
| 3 | NY-M8 | | M8 NYLOC NUT S/S | 4 |
| 4 | BHD-M8x16 | | M8x16 B/HD BOLT S/S | 2 |
| 5 | FFW-M8 | | M8x20mm OVERSIZED WASHER S/S - DIN 9021 | 4 |
| 6 | RIV-4815AS-B | | BLACK BLIND RIVET | 12 |
| 7 | RIV-4821ASS | | BLIND RIVET | 2 |
| 8 | CC-A-MP-BED-P004 | 00 | CC BO TENT UNDERBED MOLLE - BED SECTION REINFORCEMENT BRACKET | 2 |
| 9 | RIV-4810AS-B | | BLACK BLIND RIVET | 4 |

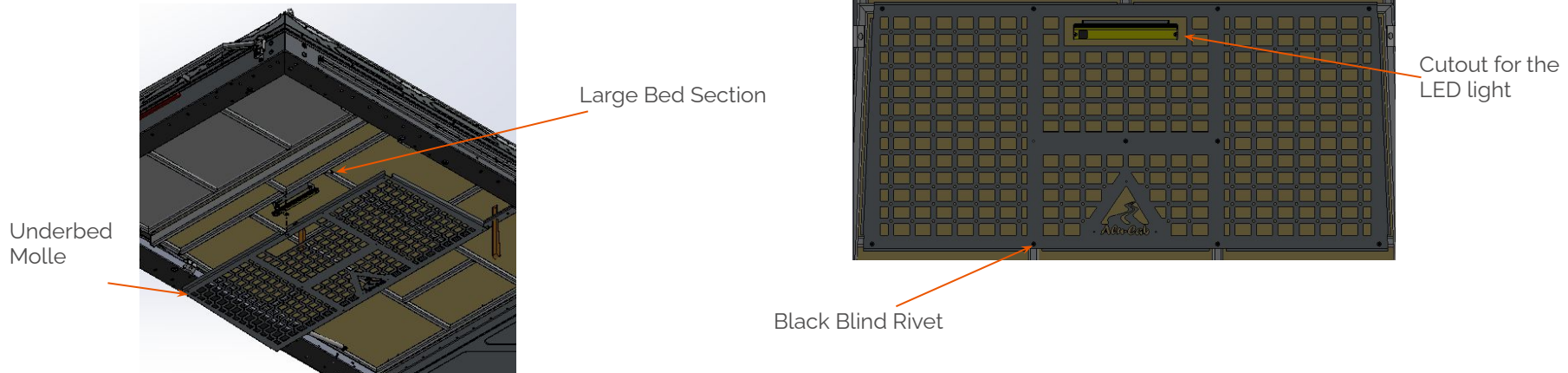
Installation Instructions

2.

MOUNTING THE UNDERBED MOLLE TO THE BED SECTION

Fit the Underbed Molle to the bottom of the larger section of the bed and mark out the position of the rivet holes. If the LED light and Underbed Molle fouls, follow the steps on the next slide.

Drill the holes with a 5mm Drill bit and Pop rivet the Underbed Molle to the large bed section with the rivets supplied.



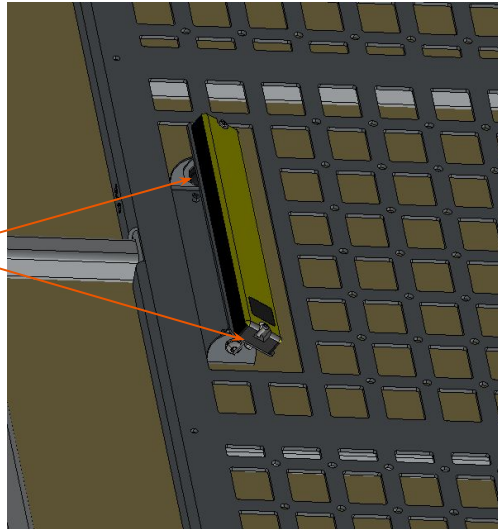
Installation Instructions

2.

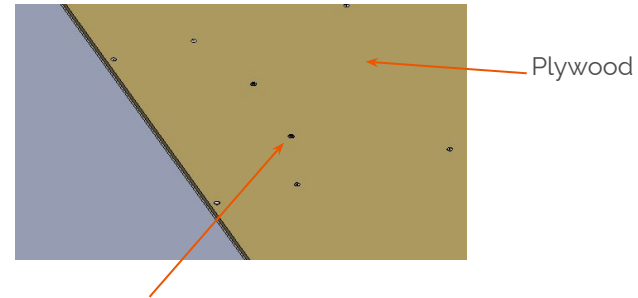
MOUNTING THE UNDERBED MOLLE TO THE BED SECTION

Remove the existing mounting rivets by drilling it out. Reposition the LED light and use the LED light bracket to mark where the new holes must be drilled. Drill the new holes with a 5mm Drill bit through the plywood and Pop rivet the LED light from the top so that the rivet stem does not protrude into the sleeping area.

When the LED light has been successfully repositioned. Follow the instructions on page 5.



Blind Rivet



Plywood

Blind Rivets to mount the LED light

2.5

Installation Instructions

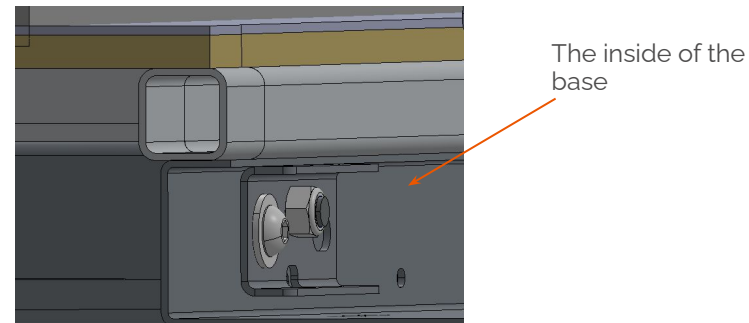
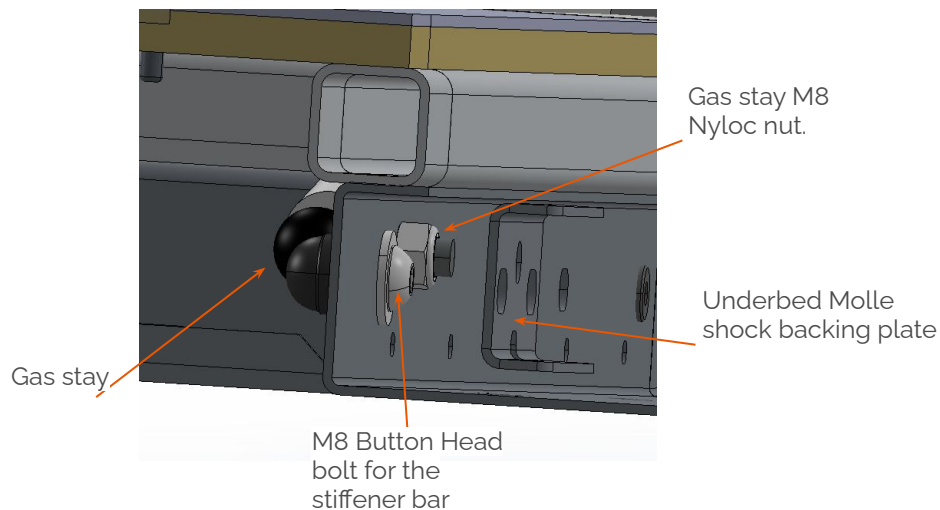
3.

REPLACING AND MOUNTING THE 750N GAS STAYS

Remove the current Gas stay by loosening the nyloc nut on the inside of the base.

If the stiffener bar is interfering with the mounting of the backing plate, loosen the bolt and place the backing plate in position before mounting the stiffener bar.

Repeat above steps for the opposite side of the bed section. Both Gas stays must be replaced.

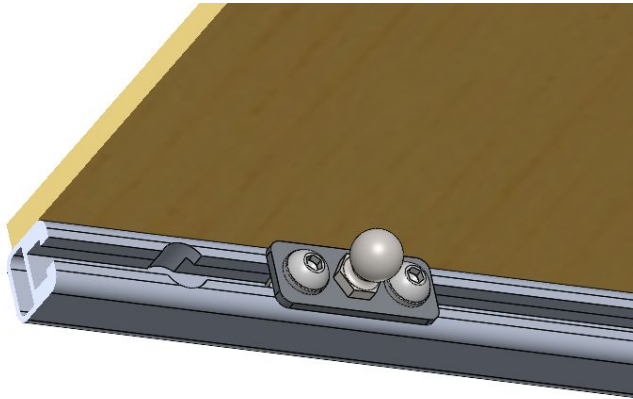


Installation Instructions

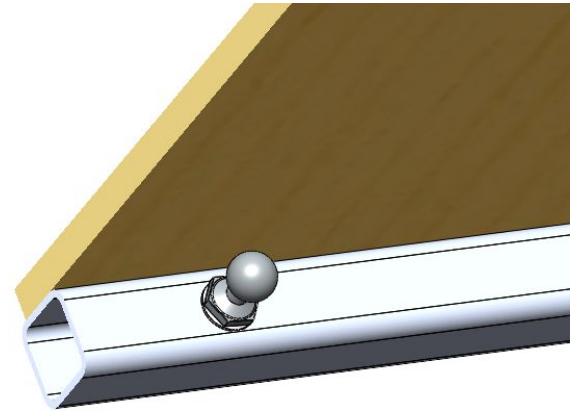
4.

Fitting the Bed Section Reinforcement Bracket

Inspect your bed section and determine whether you have a bed section that is made up from square tubing or nut slot.



The Image above indicates a Nut Slot Bed Section



The Image above indicates a Square Tubing Bed Section

Installation Instructions

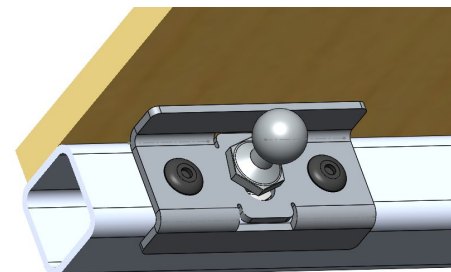
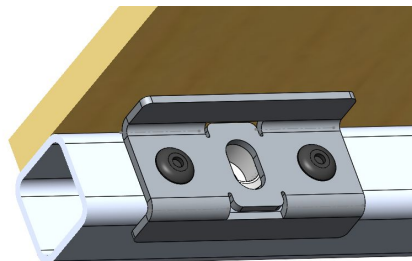
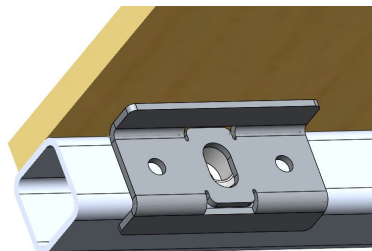
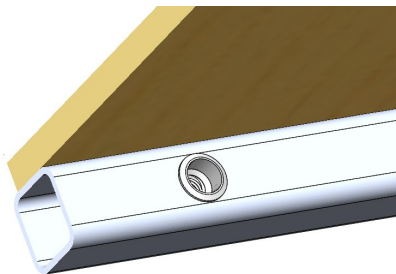
4.

Fitting the Bed Section Reinforcement Bracket

Once you have established whether you have a nut slot of square tubing bed section, install the Bed Section Reinforcement Bracket on the square tubing bed section only.

Do this by:

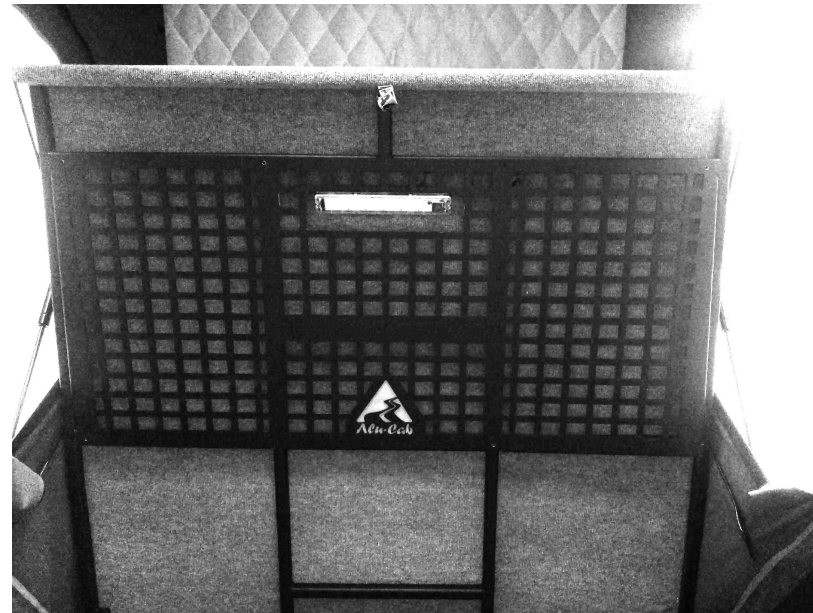
1. Unscrewing the existing shock end.
2. Aligning the Reinforcement Bracket with the Rivnut hole in the Bed Section.
3. Riveting the Reinforcement Bracket in place.
4. Refitting the shock end and shock.
5. Repeat on opposite side of the bed section.



Installation Instructions

5. Complete and ready to use.

Your ModCap Under-bed Molle is now secure and ready to use.



Disclaimer

All rights reserved. No part of this website may be reproduced, translated, stored in a retrieval system, or transmitted, in any form or by any means, electronic, mechanical, photocopying, recording or otherwise, without prior written permission of the owner.

Review all instructions information carefully before installation.

Any damages, direct or incidental to the installer and/or property due to incorrect installation of any parts are the responsibility of the installer. Due to the various applications and fitment options available, the responsibility lies with the user to ensure all mounting points are secure and tight before every trip.

If unsure, consult with your Distributor regarding the operations of our products.

Users are advised to be mindful of the load they are carrying and drive in accordance with road conditions.

WARNING

Always wear appropriate PPE (Personal protection equipment) when fitting our products. Although the mounting kit is designed to be DIY, if you have any doubts or concerns, contact an accredited fitment centre to carry out the work. Alu-Cab will not be liable for any injury to persons, and/or damage to products and/or vehicles.

While Alu-Cab Holdings takes reasonable measures to ensure that the contents of this Website are accurate and complete, Alu-Cab Holdings makes no representations or warranties, whether express or implied, as to the quality, timeliness, operation, integrity, availability or functionality of this Website or as to the accuracy, completeness or reliability of any information on this Website. Alu-Cab Holdings reserves the right to make changes, corrections and/or improvements to the information and to the products and programs described in such information, at any time without notice.

Alu-Cab Holdings will use reasonable endeavours to maintain the availability of the Website, except during scheduled maintenance periods, and reserves the right to discontinue providing the Website or the service or any part thereof with or without notice to you. Any person who accesses this Website or relies on this Website or on the information contained in this Website does so at his or her own risk.

Occasionally, at our discretion, we may include or offer third-party products or services on our website. These third-party sites have separate and independent privacy policies. We therefore have no responsibility or liability for the content and activities of these linked sites. Nonetheless, we seek to protect the integrity of our site and welcome any feedback about these sites.