

# **Alu-Cab<sup>TM</sup>**

**MAKE IT BETTER**

---

## **FITMENT INSTRUCTIONS**

**DRIVE OFF BASE MOUNTING KIT TACOMA 16 SB/LB**

**CC2-DOB-TT16-SB-M-BKT / CC2-DOB-TT16-LB-M-BKT**

# DISCLAIMER

## Preliminary information

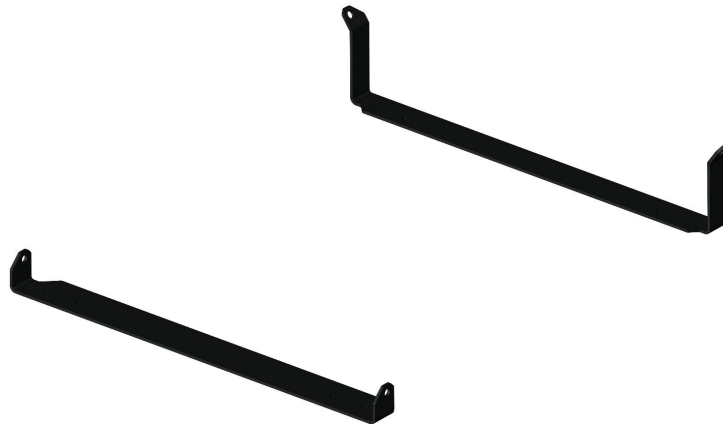
All rights reserved. No part of this document may be reproduced, translated, stored in a retrieval system. Or transmitted, in any form or by any means, electronic, mechanical, photocopying, recording or otherwise, without prior written permission of the owner.

Review all instruction information carefully before installation.

Any damages, direct or indirect to the installer and/or property due to incorrect installation of any parts are the responsibility of the installer.

Due to the various application and fitment options available, the responsibility lies with the user to ensure all mounting points are secure and tight before every trip. If unsure, consult with your Distributor regarding the operations of our products.

Users are advised to be mindful of the load they are carrying and drive in accordance with road conditions.



Service Enquiries email  
[queries@alu-cab.com](mailto:queries@alu-cab.com)

# Installation Instructions

The tables below show the equipment, i.e. tools and fasteners required to install the **MOUNTING KIT TACOMA 16 SB / LB**

Tools & Items Required
T55 Torx Bit ½" Socket
Ratchet Wrench ½" Driver
Penetrating Lubricant

Lay out all parts provided on a table or flat surface, to ensure that all required parts are accounted for,

# Installation Instructions

STEP  
1

Due to the material nature of the Toyota Tacoma loadbin, it is necessary to install mounting brackets, in order to mount the Drive-Off Base.

The below steps pertain to both the Short Bed and Long Bed variations of Toyota Tacoma, however it must be noted that there is a difference in the brackets that are used.

Undo the below identified fasteners, and set them aside for reinstallation.



# Installation Instructions

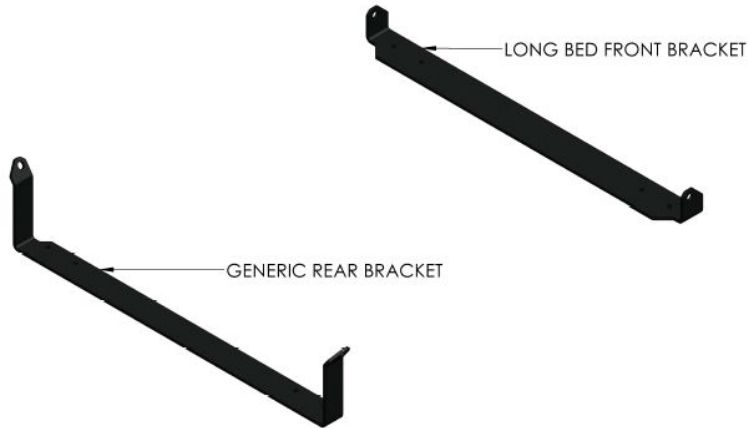
## STEP 2

Note below the difference between the Long Bed Bracket Set, and the Short Bed Bracket Set. Furthermore, pay attention to the mounting orientation of the brackets, and the direction that they face respectively.

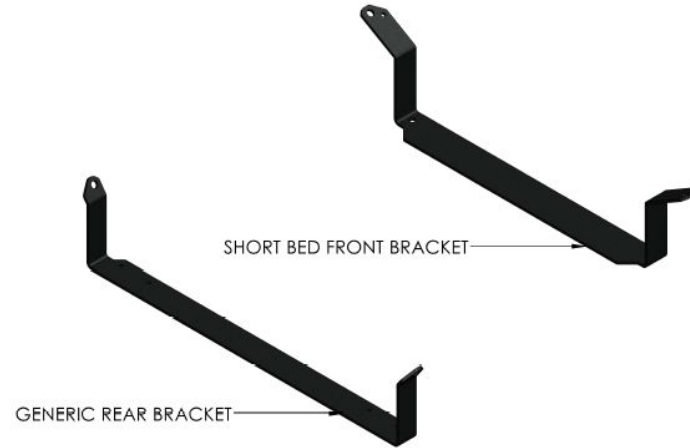
Align the bracket holes with the mounting holes in the loadbin, from where the fasteners were removed in Step 1.

Reinstall and tighten the fasteners that were removed in Step 1, into the corresponding holes.

### LONG BED BRACKET SET



### SHORT BED BRACKET SET

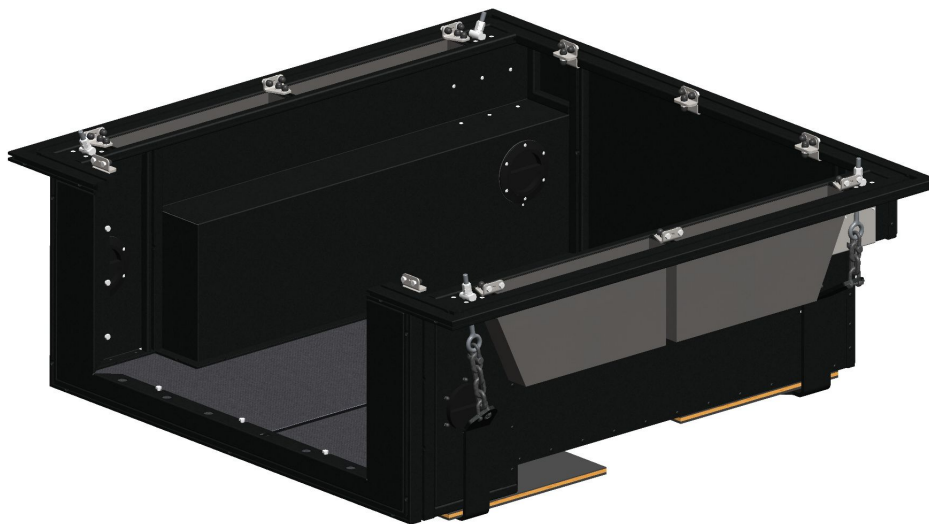


# Installation Instructions

STEP  
3

Proceed with the Drive-Off Base [Fitment Instructions](#). Instead of making use of the M12 eye-nut and spreader plate, the M10 D-Shackles can be installed onto the Bracket Set directly. Continue with the rest of the installation as outlines in the Drive-Off Base Fitment Instruction.

Below is an illustration of the Short Bed installation configuration



# DISCLAIMER

---



All rights reserved. No part of this website may be reproduced, translated, stored in a retrieval system, or transmitted, in any form or by any means, electronic, mechanical, photocopying, recording or otherwise, without prior written permission of the owner.

**Review all instructions information carefully before installation.**

Any damages, direct or incidental to the installer and/or property due to incorrect installation of any parts are the responsibility of the installer. Due to the various applications and fitment options available, the responsibility lies with the user to ensure all mounting points are secure and tight before every trip.

If unsure, consult with your Distributor regarding the operations of our products.

Users are advised to be mindful of the load they are carrying and drive in accordance with road conditions.

## **WARNING**

Always wear appropriate PPE (Personal protection equipment) when fitting our products. Although the mounting kit is designed to be DIY, if you have any doubts or concerns, contact an accredited fitment centre to carry out the work. Alu-Cab will not be liable for any injury to persons, and/or damage to products and/or vehicles.

While Alu-Cab Holdings takes reasonable measures to ensure that the contents of this Website are accurate and complete, Alu-Cab Holdings makes no representations or warranties, whether express or implied, as to the quality, timeliness, operation, integrity, availability or functionality of this Website or as to the accuracy, completeness or reliability of any information on this Website. Alu-Cab Holdings reserves the right to make changes, corrections and/or improvements to the information and to the products and programs described in such information, at any time without notice.

Alu-Cab Holdings will use reasonable endeavours to maintain the availability of the Website, except during scheduled maintenance periods, and reserves the right to discontinue providing the Website or the service or any part thereof with or without notice to you. Any person who accesses this Website or relies on this Website or on the information contained in this Website does so at his or her own risk.

Occasionally, at our discretion, we may include or offer third-party products or services on our website. These third-party sites have separate and independent privacy policies. We therefore have no responsibility or liability for the content and activities of these linked sites. Nonetheless, we seek to protect the integrity of our site and welcome any feedback about these sites.