

Alu-CabTM

MAKE IT BETTER

FITMENT INSTRUCTIONS

DRIVE OFF BASE MOUNTING KIT EXTRA CAB TO DOUBLE CAB

CC2-DOB-XC-DC-M-BKT

DISCLAIMER

Preliminary information

All rights reserved. No part of this document may be reproduced, translated, stored in a retrieval system. Or transmitted, in any form or by any means, electronic, mechanical, photocopying, recording or otherwise, without prior written permission of the owner.

Review all instruction information carefully before installation.

Any damages, direct or indirect to the installer and/or property due to incorrect installation of any parts are the responsibility of the installer.

Due to the various application and fitment options available, the responsibility lies with the user to ensure all mounting points are secure and tight before every trip. If unsure, consult with your Distributor regarding the operations of our products.

Users are advised to be mindful of the load they are carrying and drive in accordance with road conditions.

PLEASE NOTE: Installation of an **XC Drive-Off Base to a DC Loadbin** may require removal of the tailgate and inhibit the full use of the canvas side pockets. Additional steps may need to be taken to seal the rear M12 Eye-Bolt mounting points from ingress that are unused.



Service Enquiries email
queries@alu-cab.com

Installation Instructions

The tables below show the equipment, i.e. tools and fasteners required to install the **XC Drive-Off Base to a DC Loadbin**

Tools & Items Required
24mm Socket, Wrench & Spanner
19mm Socket, Wrench & Spanner
13mm Socket, Wrench & Spanner
10mm Socket, Wrench & Spanner
3mm, 5mm Drill Bit and Cordless Drill
3mm and 4mm Allen Key Socket
Rivet Gun



Fasteners Supplied	Qty
M16x65 HEX BOLT	2
M16 FLAT WASHER S/S - DIN 125	4
M16 NYLOC NUT	2
M8x20 HEX BOLT	6
M8 FLAT WASHER S/S - DIN 125	6
M8 NYLOC NUT	6
M8 NUT CAP	6
M5x12 BUTTON HEAD BOLT	12
M10 D-SHACKLE	2
M12 EYE NUT	2
M12x30 HEX BOLT	2
M12 SPRING WASHER S/S	2
M12 NUT CAP	2
RIGGING SCREW 12mm	2
SEALED BLIND RIVET	24

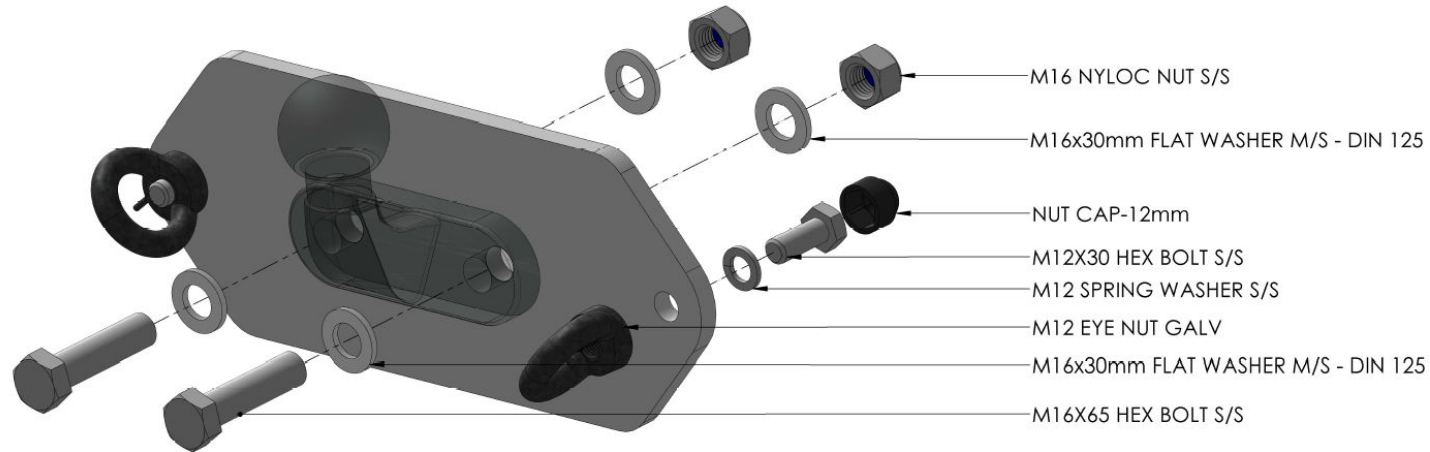
Lay out all parts provided on a table or flat surface, to ensure that all required parts are accounted for,

Installation Instructions

STEP 1

The mounting kit is intended for the 2-Bolt Towing Hook system. A Backplate is fitted behind the towing hook, that facilitates the M12 Eye-Nuts, to fasten the 12mm Rigging Screws to.

Start by removing the existing towing hook and set it aside for re-fitment. Install the Backplate and towing hook using the fasteners as illustrated below. **Do not exceed 180N.m. torque for the M16 fasteners.** Add [Loctite 242](#) to the M12 Hex bolts and **do not exceed 80N.m. torque.**



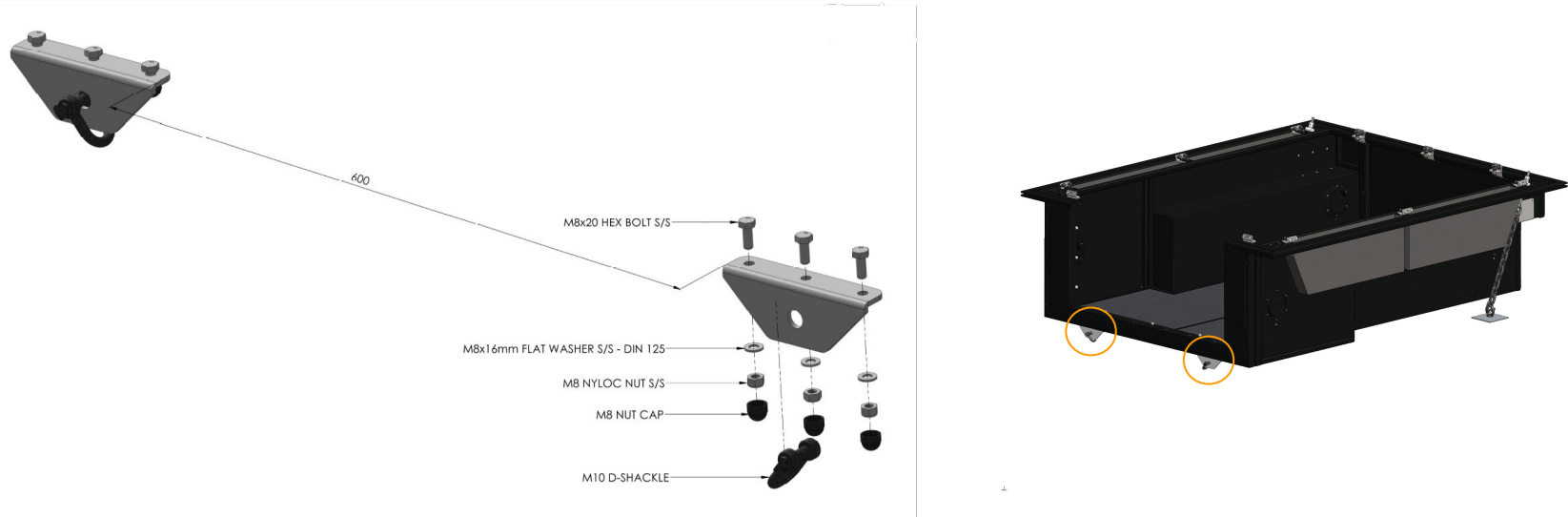
Installation Instructions

STEP 2

With the Drive-Off Base fitted to the loadbin, and the front fasteners secured as per the respective [Fitment Instruction](#); Install the rear frame Lower Mount Plates to the Drive-Off Base.

Slide 3 x M8x20 Hex Bolts underneath the Drive-Off Base rear frame, install the bracket, and secure with corresponding M8 flat washer and M8 Nyloc Nut. **Note the orientation of the Lower Mount Plates, relative to the Drive-Off Base**, the short flange faces inward towards the front of the vehicle. **Do not exceed 18N.m Torque for the M8 Fasteners.** Install the D-Shackles in either of the Lower Mount Plates, as illustrated below.

Ensure that there is roughly 600mm between the two Lower Mount Plates, centred in the middle of the Drive-Off Base frame. The **distance may need to be adjusted depending on the distance between the loadbin and the towing hook.**



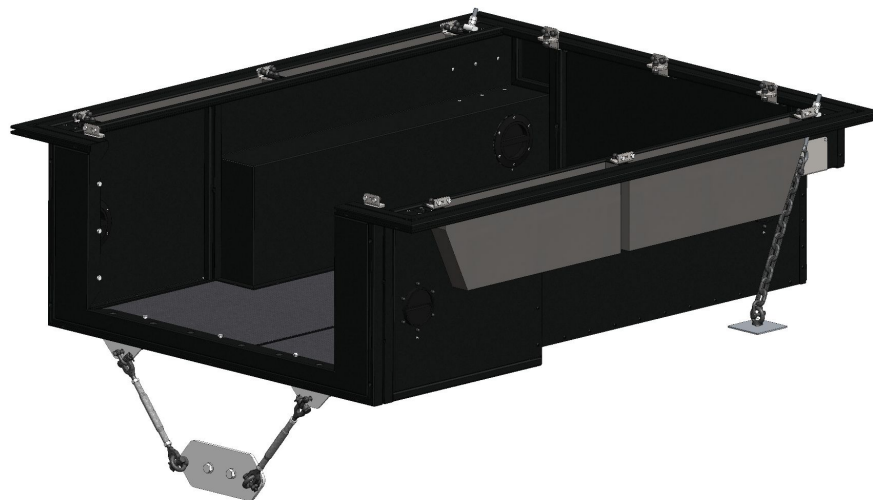
Installation Instructions

STEP
3

With the Backplate and Lower Mount Plates secured, utilise the 12mm Rigging Screws to fasten the Lower Mount Plates to the Backplate. Tension the Rigging Screws in conjunction with the front M12 Eye-Bolts, to ensure equal tension on the front and rear mounting points of the Drive-Off Base.

Use the M12 Nut on the Rigging Screw to lock the position of the Rigging Screw.

Inspect all the mounting related fasteners before undertaking a journey, to ensure that fasteners have not come undone over time.

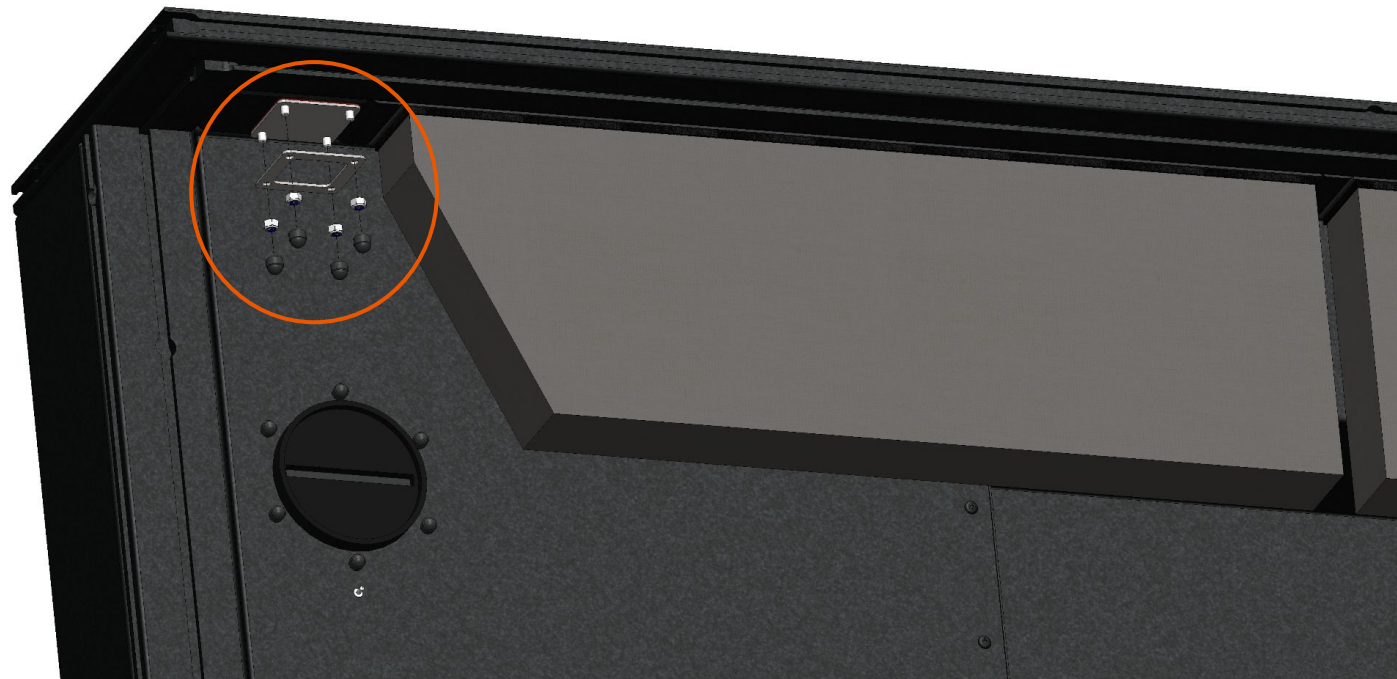


Installation Instructions

STEP
4

The Rear Membrane Plates can be removed, to be changed out for a Blanking Plate, to stop any ingress from entering at this point.

The same fasteners can be reused, and keep the silicone membrane in place to act as a seal - **substitute only the plate.** This must be done on the LHS and RHS on the rear of the Drive-Off Base unit.



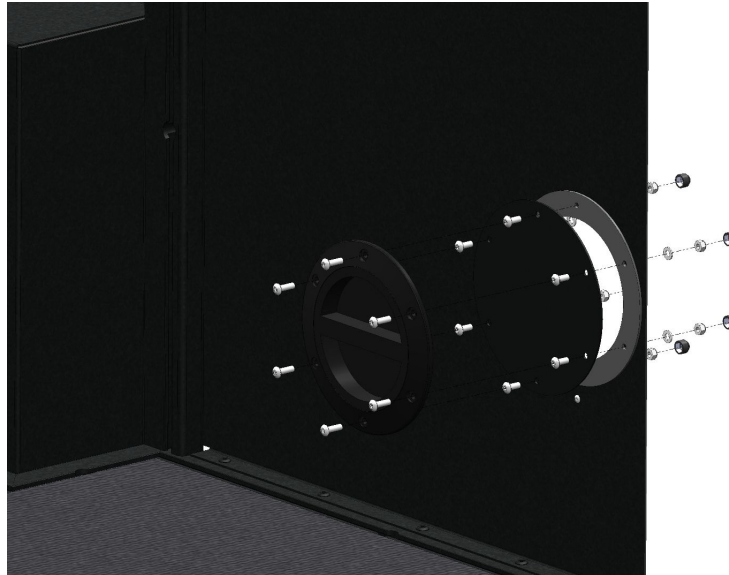
Installation Instructions

STEP 5

The rear Inspection Hatch can be removed next, to substitute for a Cover Plate. M5x12 Button Head Bolts are provided to compensate for the difference in stack. Other fasteners such as the M5 Washers, M5 Nylock Nut and M5 Nut Cap can be reused as shown below.

The Inspection Hatch's leash fastener can be drilled out, and replaced with a 3mm Sealed Rivet.

It is important to retain the rubber seal ring, to ensure that ingress is prevented in this area.
The same can be done for the rear LHS and RHS inspection hatches.



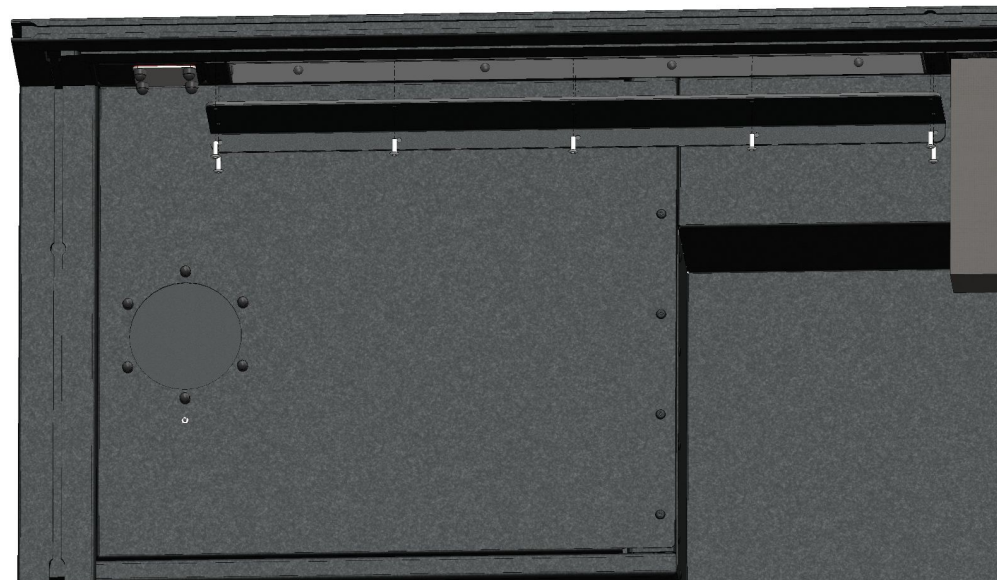
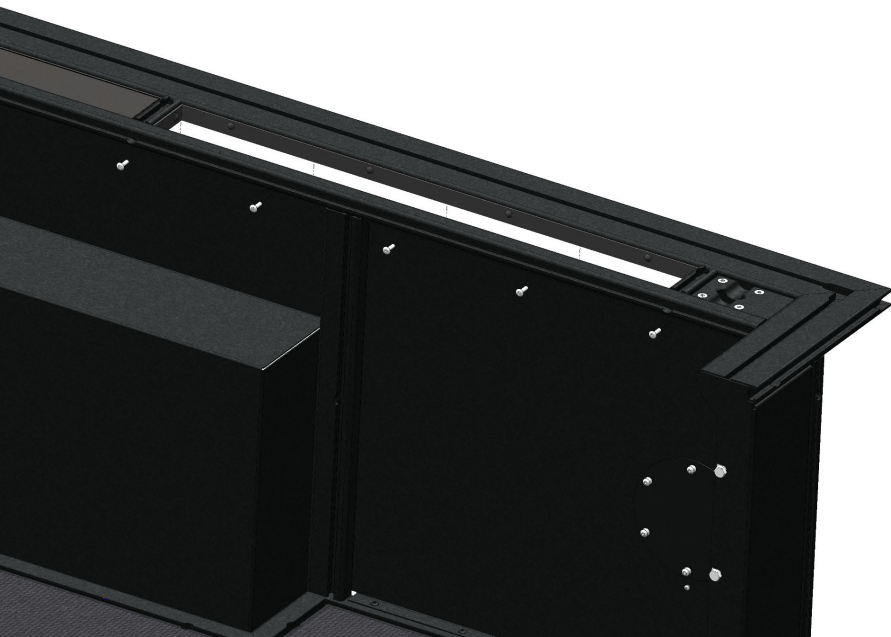
Installation Instructions

STEP
6

The cover plate for the rear Canvas Bags are optional, but has to be exchanged prior to fitment of the Drive-Off Base unit on the vehicle.

The Cover Plate position can be marked out, and the corresponding 5mm holes can be drilled. The Cover Plate can then be secured by fastening the vertical rivets from the inside of the unit first, followed by the horizontal rivets that are located on the outside of the unit.

Ensure that the cover plate is snug against the unit, to limit any ingress in this area.
The same steps can be followed for the rear LHS and RHS Cover Plates.



Installation Instructions

STEP
7

The XC Drive-Off Base unit is now prepared to be installed on a DC Load Bin.



DISCLAIMER



All rights reserved. No part of this website may be reproduced, translated, stored in a retrieval system, or transmitted, in any form or by any means, electronic, mechanical, photocopying, recording or otherwise, without prior written permission of the owner.

Review all instructions information carefully before installation.

Any damages, direct or incidental to the installer and/or property due to incorrect installation of any parts are the responsibility of the installer. Due to the various applications and fitment options available, the responsibility lies with the user to ensure all mounting points are secure and tight before every trip.

If unsure, consult with your Distributor regarding the operations of our products.

Users are advised to be mindful of the load they are carrying and drive in accordance with road conditions.

WARNING

Always wear appropriate PPE (Personal protection equipment) when fitting our products. Although the mounting kit is designed to be DIY, if you have any doubts or concerns, contact an accredited fitment centre to carry out the work. Alu-Cab will not be liable for any injury to persons, and/or damage to products and/or vehicles.

While Alu-Cab Holdings takes reasonable measures to ensure that the contents of this Website are accurate and complete, Alu-Cab Holdings makes no representations or warranties, whether express or implied, as to the quality, timeliness, operation, integrity, availability or functionality of this Website or as to the accuracy, completeness or reliability of any information on this Website. Alu-Cab Holdings reserves the right to make changes, corrections and/or improvements to the information and to the products and programs described in such information, at any time without notice.

Alu-Cab Holdings will use reasonable endeavours to maintain the availability of the Website, except during scheduled maintenance periods, and reserves the right to discontinue providing the Website or the service or any part thereof with or without notice to you. Any person who accesses this Website or relies on this Website or on the information contained in this Website does so at his or her own risk.

Occasionally, at our discretion, we may include or offer third-party products or services on our website. These third-party sites have separate and independent privacy policies. We therefore have no responsibility or liability for the content and activities of these linked sites. Nonetheless, we seek to protect the integrity of our site and welcome any feedback about these sites.