

Alu-CabTM

MAKE IT BETTER

FITMENT INSTRUCTIONS

JAC T8 FILLER KIT

CC2-FK-JC24-T8

DISCLAIMER

Preliminary information

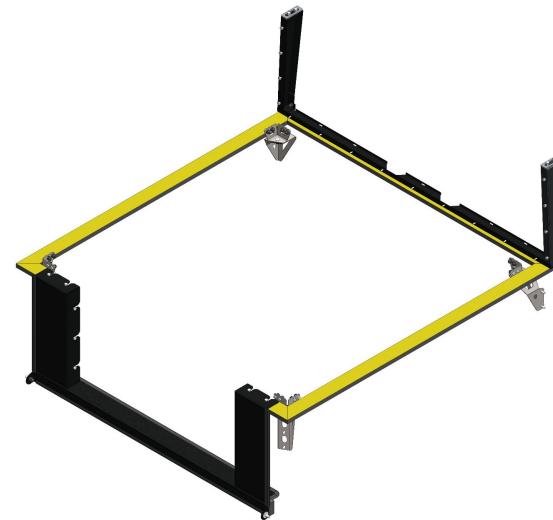
All rights reserved. No part of this document may be reproduced, translated, stored in a retrieval system. Or transmitted, in any form or by any means, electronic., mechanical, photocopying, recording or otherwise, without prior written permission of the owner.

Review all instruction information carefully before installation.

Any damages, direct or indirect to the installer and/or property due to incorrect installation of any parts are the responsibility of the installer.

Due to the various application and fitment options available, the responsibility lies with the user to ensure all mounting points are secure and tight before every trip. If unsure, consult with your Distributor regarding the operations of our products.

Users are advised to be mindful of the load they are carrying and drive in accordance with road conditions.



Service Enquiries email
queries@alu-cab.com

Installation Instructions

The tables below show the equipment, i.e. tools and fasteners required to install the **JAC T8 Filler Kit**

Tools & Items Required
Rivet Gun
5mm Drill Bit & Drill
Sikaflex®-552 AT & Closed Caulk Gun
10mm Socket, Wrench & 10mm Spanner
13mm Socket, Wrench & 13mm Spanner
17mm Socket, Wrench & 17mm Spanners
5mm & 4mm Allen Key



Lay out all parts provided on a table or flat surface, to ensure that all required parts are accounted for,

Fasteners Supplied	Qty
M8X20 B/HD BOLT S/S	2
M6X16 B/HD BOLT S/S	6
M10X20MM FLAT WASHER S/S - DIN 125	2
M8X16MM FLAT WASHER S/S - DIN 125	58
M6X12MM FLAT WASHER S/S - DIN 125	12
M10X30 HEX BOLT S/S - 1.25 PITCH	2
M8X16 HEX BOLT S/S	10
M8X20 HEX BOLT S/S	24
M8X25 HEX BOLT S/S	12
M8 NYLOC NUT S/S	44
M6 NYLOC NUT S/S	6
M8X16 CUP SQ BOLT S/S	4
M8X20 CUP SQ BOLT S/S	4
M8X25 CUP SQ BOLT S/S	4
M10 SPRING WASHER S/S	2
M8 SPRING WASHER S/S	8
NUT CAP M10	2
NUT CAP M8	52
NUT CAP M6	6
PLASTIC WASHER (NYLON)	2
SEALED BLIND RIVET	9

Installation Instructions

STEP 1

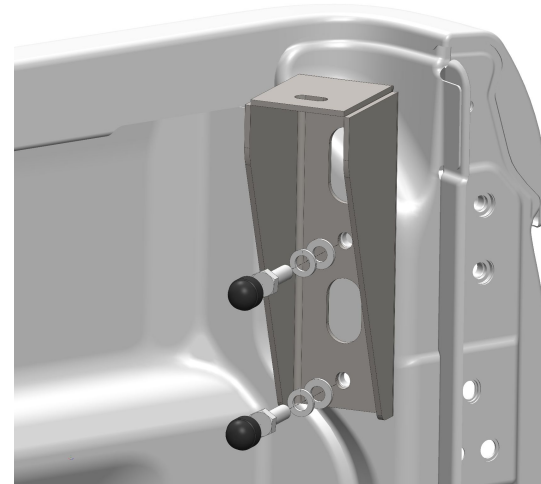
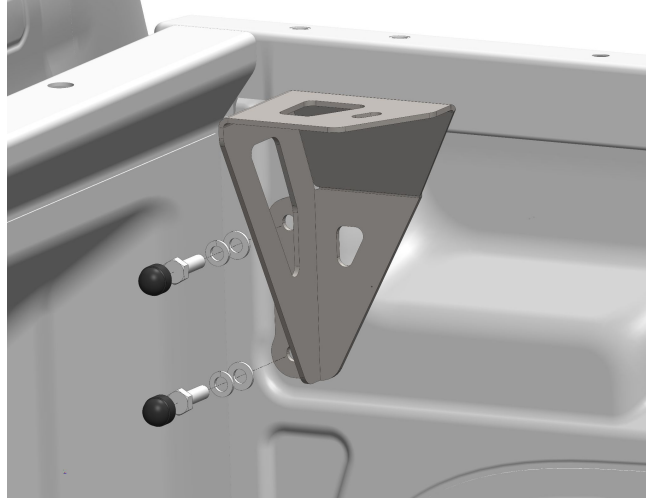
Start by removing the tailgate from the loadbin, set the M10 pivot bolts aside for later re-use. Remove the roll bars from the front of the loadbin. These bolts will not be re-used and can be stored for safekeeping.

Identify the 2 x M8 bolts in the left and right, front and rear of the loadbin, which will be used for the installation of the Mounting Brackets.

The Mounting Brackets in the front of the loadbin are left and right specific. The Mounting Brackets in the rear of the loadbin are universal. Refer to the below schematic to identify which Mounting Bracket is applicable to the respective mounting position:

Secure the brackets in each respective corner, making use of 2 x M8x25 Hex Bolts, 2 x M8 Spring Washers, 2 x M8 Flat Washers and 2 x M8 Nut Caps.

Do not exceed 20 N.m. torque for the M8 Hex Bolts



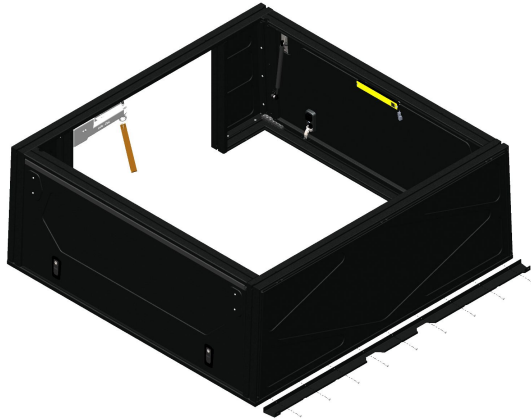
Installation Instructions

STEP 2

Following the loadbin Mounting Bracket preparation, the ModCAP or Canopy Camper unit can be prepared for installation to the loadbin.

Identify the Front Bottom Filler that is shown below, position the Front Bottom Filler in preparation for the installation thereof. Ensure that the bottom of the Front Bottom Filler is flush with the bottom of the Camper's frame and that the Front Bottom Filler is equally distributed between the left and right sides of the Camper's frame.

With the Front Bottom Filler's position established, mark the corresponding holes on the frame, and drill 5mm holes into the frame to secure the Front Bottom Filler using the 9 x RIV-4815 Sealed Blind Rivets provided.



Installation Instructions

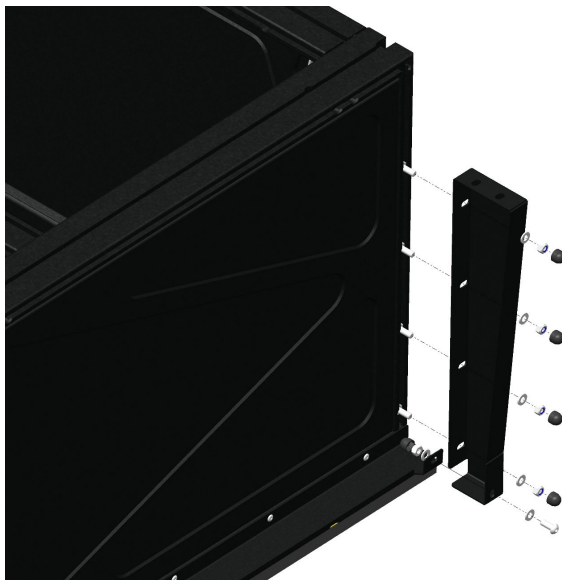
STEP
3

The Front Side Fillers can now be installed to the Camper Frame. This step is not necessary when fitting a ModCAP, where the roof or tent does not overhang on the front of the Camper, i.e. the Flat Roof or Compact Camper as examples.

Make use of 4 x M8x20 Hex Bolts, 4 x M8 Washers, 4 x M8 Nyloc Nuts and 4 x M8 Nut Caps to secure the Side Filler to the Camper Frame. The Side Filler is secured to the Bottom Front Filler with 1 x M8x20 Button Head Bolt, 2 x M8 Washers, 1 x M8 Nyloc Nut and 1 x M8 Nut Cap.

Do not exceed 20 N.m. torque for the M8 Hex Bolts and 18 N.m. torque for M8 Button Head Bolts

Repeat the same procedure for the other side;s Side Filler part.

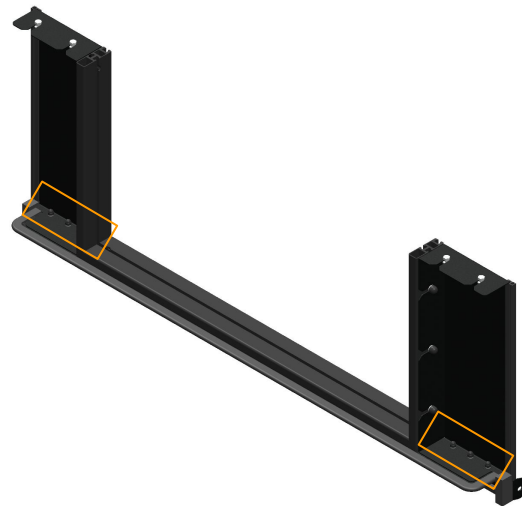
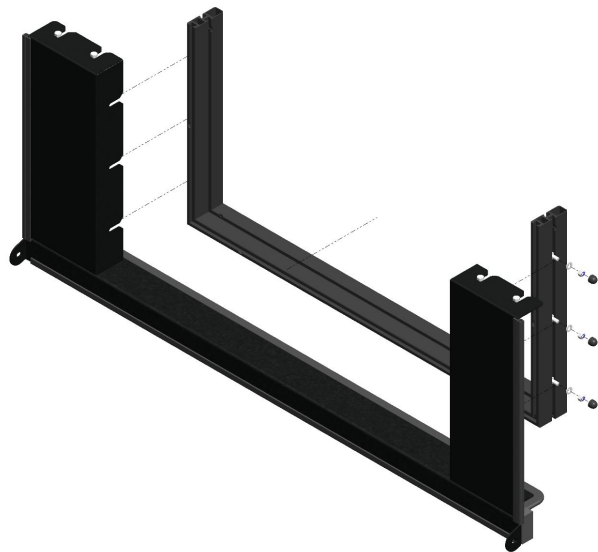


Installation Instructions

STEP
4

The Camper's U-Frame can now be installed to the Rear Filler Assembly that is shown below. Prepare the U-Frame by installing 3 x M8x16 Hex Bolts, 3 x M8 Washers and 3 x M8 Nyloc Nuts on either side of the U-Frame. Align the Fasteners with the corresponding Side Filler cut-outs, and slide the U-Frame into position. Once centred, the U-Frame can be fastened to the Rear Filler Assembly. **Do not exceed 20 N.m. torque for the M8 Hex Bolts.**

The Side Fillers can now be secured to the Bottom Filler Plate, by fastening the pre-fitted 3 x M6 Button Head Bolts and 3 x M8 Nylock Nuts on either of the Side Fillers. **Do not exceed 8 N.m. torque for the M6 Button Head Bolts.**



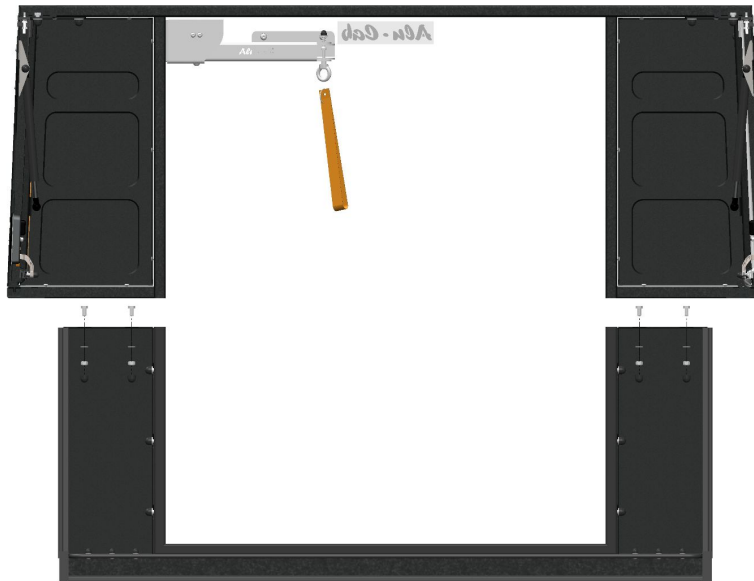
Installation Instructions

STEP
5

The U-Frame and Rear Filler Assembly can now be fitted to the Camper's Base. Making use of 2 x M8x16 Hex Bolts installed into either side of the Camper's bottom frame, aligning to the corresponding cut-out of the Rear Side Fillers.

The Filler Assembly can be lifted into position and secured using 2 x M8 Washers, 2 x M8 Nylock Nuts and M8 Nut Caps as illustrated below.

Do not exceed 20 N.m. torque for the M8 Hex Bolts.



Installation Instructions

STEP
6

Secure the U-Door Frame to the top portion, making use of 4 x M8x16 Button Head Bolts, 4 x M8 Spring Washers, 4 x M8 Nuts and the frame connector plate **162-FRA-CONN-PLT-01** on the right, repeat for the left. **Do not exceed 18 N.m. torque for the M8 Button Head Bolts.**

Once secure, proceed to install the rear frame connector plate **162-FRA-CONN-PLT-02** using 8 x M4.8 x 15-AS Rivets on the right, repeat for the left.. Corresponding 5 mm holes need to be drilled into the U-Door Frame, the rear frame connector plate can be used as a template for drilling the holes in the correct position



Installation Instructions

STEP
7

Install the rear door side rebate into the door frame using the 20 x M4.8 x 15-ASSC Countersunk Rivets. The side door rebate frame can be used as a template to drill the corresponding 5 mm holes into the door frame.

Note the Teflon door wedge that must be installed in the bottom left corner. Once the door side rebate has been installed, the door seal rubber can be installed onto the rebate flange.

After installation of rebate, it can be sealed between the frame by making use of [Sikaflex®-552 AT](#)



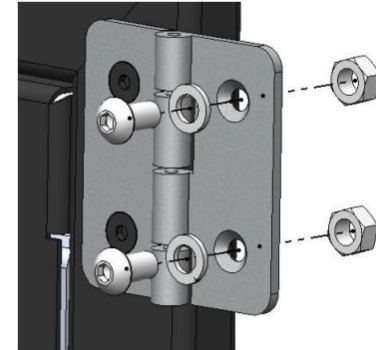
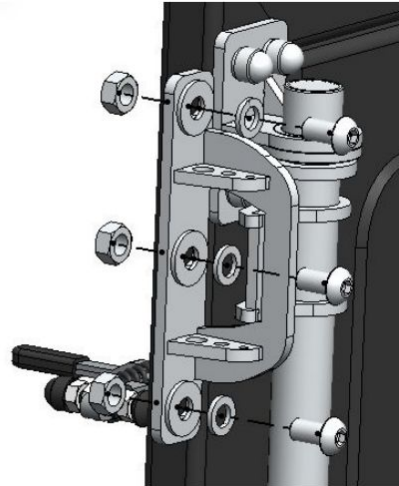
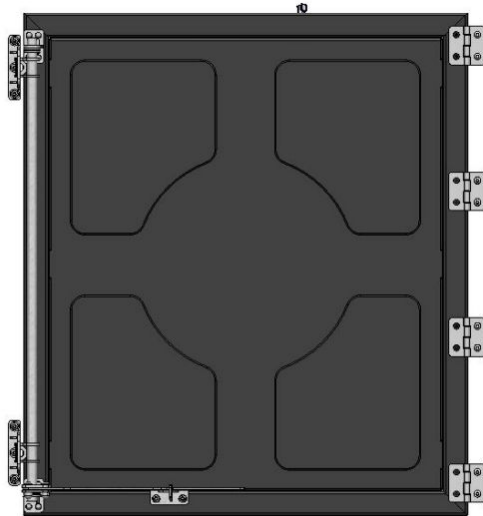
Installation Instructions

STEP 8

The rear door is supplied with the hinges and door lock pre-installed. Centre the door assembly in the U-Door frame, and secure the hinges and latch assemblies to the U-Door frame outward facing nuts. **Do not exceed 18N.m. torque for the M8 Button Head Bolts.**

The catch is secured using 3 x M8x16 Button Head Bolts, 3 x M8 Spring Washers, 3 x Flat Washers and 3 x M8 Nuts inserted into the nutslot.

The hinge is secured using 2 x M8x16 Button Head Bolts, 2 x M8 Spring Washers and 2 x M8 Nuts inserted into the nutslot.



Installation Instructions

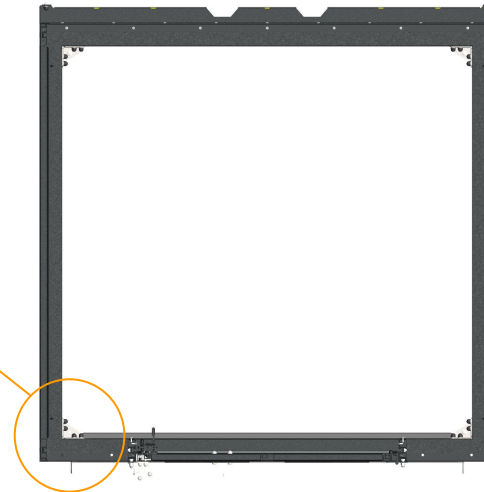
STEP
9

The Mounting Kit Brackets that secures to the Camper frame can now be installed. The Corner Brackets are orientation specific, shown below if the left-rear corner of the Camper frame - note the orientation of the bracket.

The bracket is secured to the Camper frame by making use of 4 x M8x20 Hex Bolts, 4 x M8 Washers, 4 x M8 Nyloc Nuts and 4 x M8 Nut Caps.

Do not exceed 20 N.m. torque for the M8 Hex Bolts.

Proceed to install the Corner Brackets to each of the Camper Frame corners. Take note of the orientation of each of the Corner Brackets, that it imitates the example seen below, where the flat bottom surface faces towards the middle of the Camper.

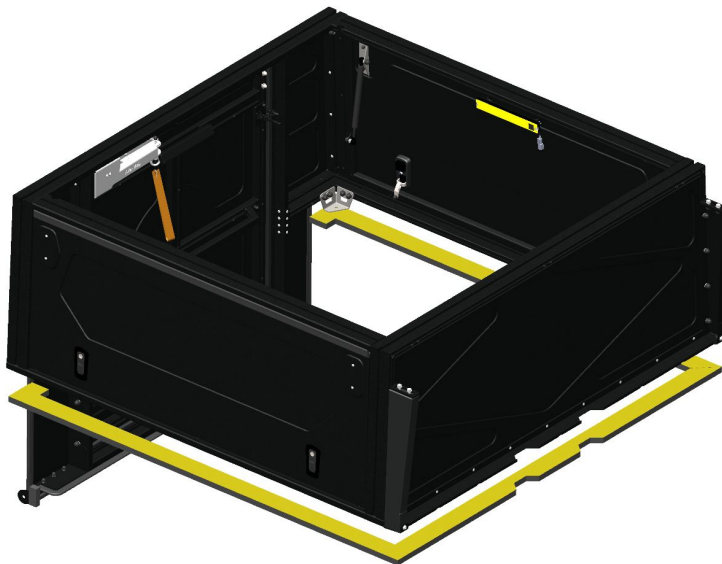


Installation Instructions

STEP
10

The supplied Rubber Seal can now be installed to the Camper Assembly. One side of the seal has a peel-back film that preserves the adhesive underneath. The adhesive is a Pressure Sensitive Adhesive (PSA), and is most effectively applied prior to mounting the Camper, where there will be pressure between the Camper Base and the Loadbin, which will promote good adhesion.

Ensure that the seal is oriented as shown below, and that the adhesive side is applied to the underside of the Camper's Base.



Installation Instructions

STEP
11

The Camper and Filler Kit assembly can now be lowered onto the vehicle load bin. Use the Mounting Brackets as reference points to align the placement of the Camper on the load bin.

Take the necessary precautions to prevent any accidental damage to the bodywork of the vehicle during the lifting operation. It is advised to lift the assembly by the Camper's frame, attaching lifting slings to the vertical members of the Camper frame.

Ensure that the lifting equipment is rated to handle the load of the Camper and the Filler Kit assembly.



Installation Instructions

STEP
12

The Corner Brackets is secured to the Mounting Brackets by making use of 1 x M8 Cup Square Bolt, 1 x M8 Washer, 1 x M8 Nyloc Nut and 1 x M8 Nut Cap. The same fasteners are used in each of the corner mounting points. **Do not exceed 20 N.m. torque for the M8 Hex Bolts**

The Packing List includes a variety of M8 Cup Square lengths, in the case where Shims are used between brackets to adjust the height of the Camper.



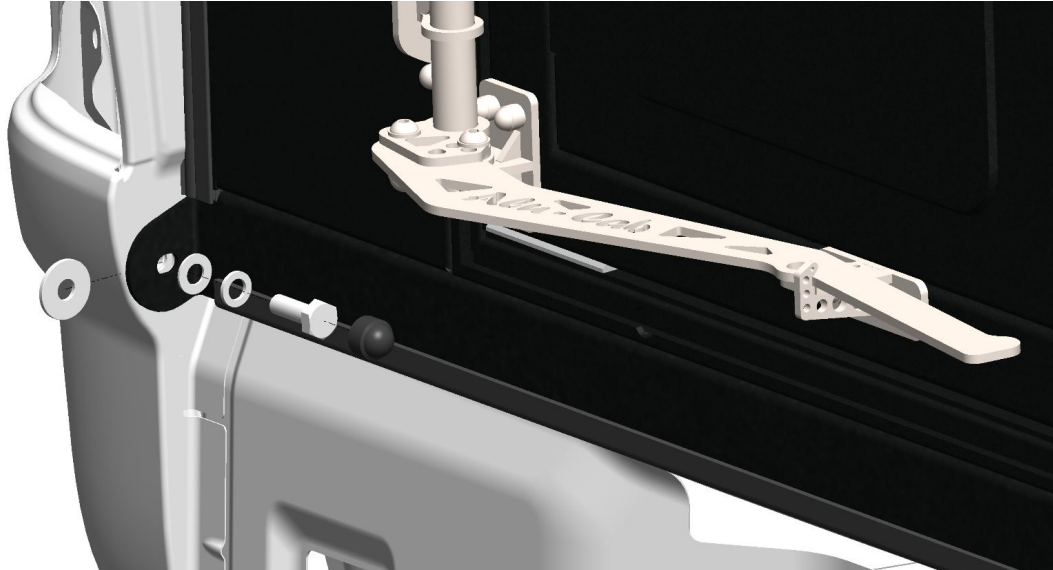
Installation Instructions

STEP
13

The Rear Bottom Filler can now be secure to the Tailgate pivot point. Ensure that an M10 Plastic Washer is wedged between the Rear Bottom Filler and the Loadbin on either side.

The M10 fasteners can then be installed, to secure the Rear Bottom Filler to the load bin. The following fasteners are used for this purpose, 1 x M10 Washer, 1 x M10 Spring Washer, 1 x M10x30 Hex Bolt and 1 x M10 Nut Cap.

Repeat the same fasteners on the other side of the Tailgate pivot point.



Installation Instructions

STEP
14

The last step in the installation process is to seal the Camper, where panels have been butted up together, and optionally where the rubber seal makes contact on the loadbin. Although the rubber seal provides a sufficient seal, sealing the area further ensures that no ingress can enter through this area.

Refer to the below illustration, of where sealing may be necessary, but will not be limited to due to the unique nature of each installation:
It is recommended to make use of [Sikaflex®-552 AT](#) for sealing purposes.



DISCLAIMER



All rights reserved. No part of this website may be reproduced, translated, stored in a retrieval system, or transmitted, in any form or by any means, electronic, mechanical, photocopying, recording or otherwise, without prior written permission of the owner.

Review all instructions information carefully before installation.

Any damages, direct or incidental to the installer and/or property due to incorrect installation of any parts are the responsibility of the installer. Due to the various applications and fitment options available, the responsibility lies with the user to ensure all mounting points are secure and tight before every trip.

If unsure, consult with your Distributor regarding the operations of our products.

Users are advised to be mindful of the load they are carrying and drive in accordance with road conditions.

WARNING

Always wear appropriate PPE (Personal protection equipment) when fitting our products. Although the mounting kit is designed to be DIY, if you have any doubts or concerns, contact an accredited fitment centre to carry out the work. Alu-Cab will not be liable for any injury to persons, and/or damage to products and/or vehicles.

While Alu-Cab Holdings takes reasonable measures to ensure that the contents of this Website are accurate and complete, Alu-Cab Holdings makes no representations or warranties, whether express or implied, as to the quality, timeliness, operation, integrity, availability or functionality of this Website or as to the accuracy, completeness or reliability of any information on this Website. Alu-Cab Holdings reserves the right to make changes, corrections and/or improvements to the information and to the products and programs described in such information, at any time without notice.

Alu-Cab Holdings will use reasonable endeavours to maintain the availability of the Website, except during scheduled maintenance periods, and reserves the right to discontinue providing the Website or the service or any part thereof with or without notice to you. Any person who accesses this Website or relies on this Website or on the information contained in this Website does so at his or her own risk.

Occasionally, at our discretion, we may include or offer third-party products or services on our website. These third-party sites have separate and independent privacy policies. We therefore have no responsibility or liability for the content and activities of these linked sites. Nonetheless, we seek to protect the integrity of our site and welcome any feedback about these sites.