

Alu-CabTM

MAKE IT BETTER

FITMENT INSTRUCTIONS

COMPACT CANOPY CAMPER

CC-BO-COMP-TENT

Installation Instructions



Installation and fitment instructions includes the tools required, fasteners included in the kit, and the hardware included in the kit.

Please follow the instructions and check installation steps with the images in this document.

Alu-Cab recommends that all sealing work is allowed to cure for 24 hours, after which you may drive the vehicle on normal paved roads. Before driving off-road with your Alu-Cab product or operating your roof conversion, an additional cure period of 48 hours is required.

Failure to follow these instructions will void your warranty. Please ensure that you follow the sealant manufacturers curing time as per their technical data sheet.

These times may differ slightly from the times we have recommended.



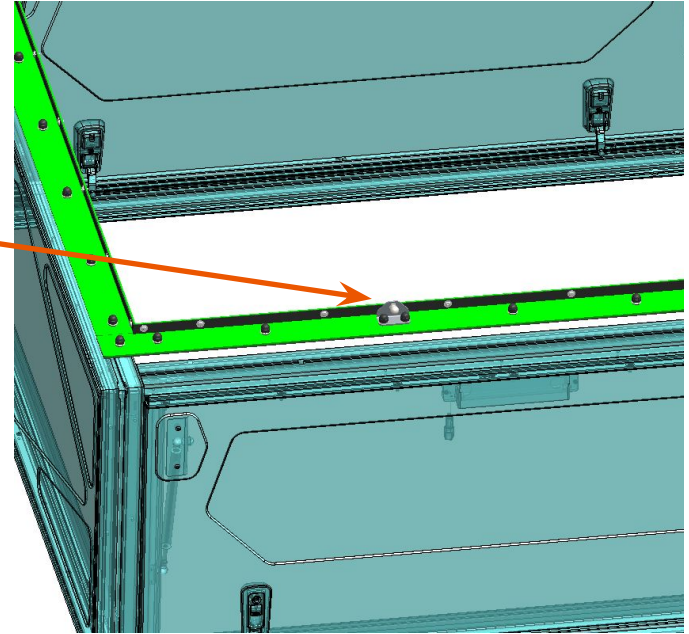
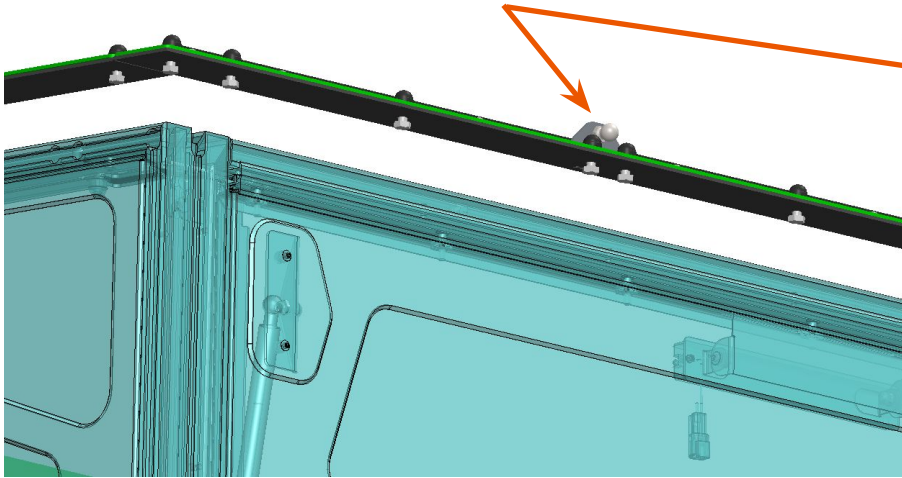
Service Enquiries email
queries@alu-cab.com

Installation Instructions

1

Place the m8x20 hex bolts along the nut slot on the top side of the base and use the holes on the gasket to align the bolts with the gasket and canvas mounting plate as seen below. Please ensure that the m8 washers are the ones with the rubber seal.

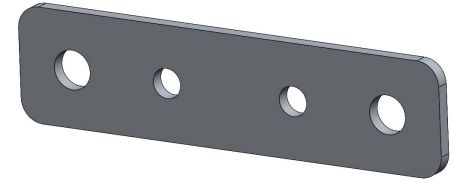
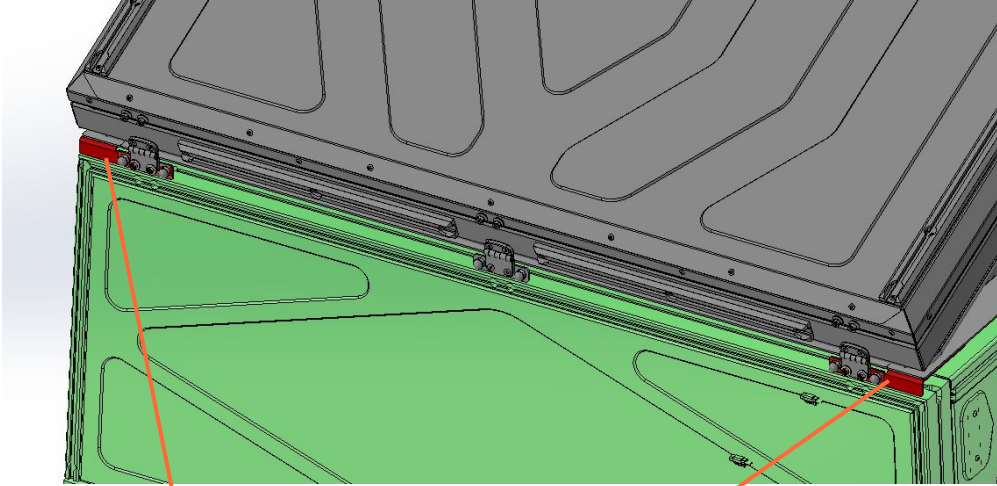
The base shock brackets will also be fitted at this stage.



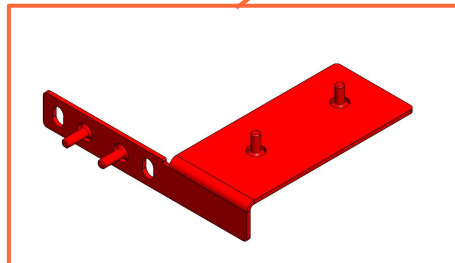
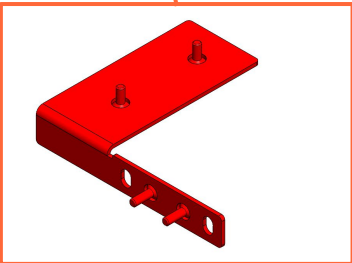
Installation Instructions

2

The next step is to mount the hinges to the modcap base. Remove the transport brackets, one by one and tie the hinges down using the the supplied hinge adapter plates.



Install Hinge Adapter Plate x 3

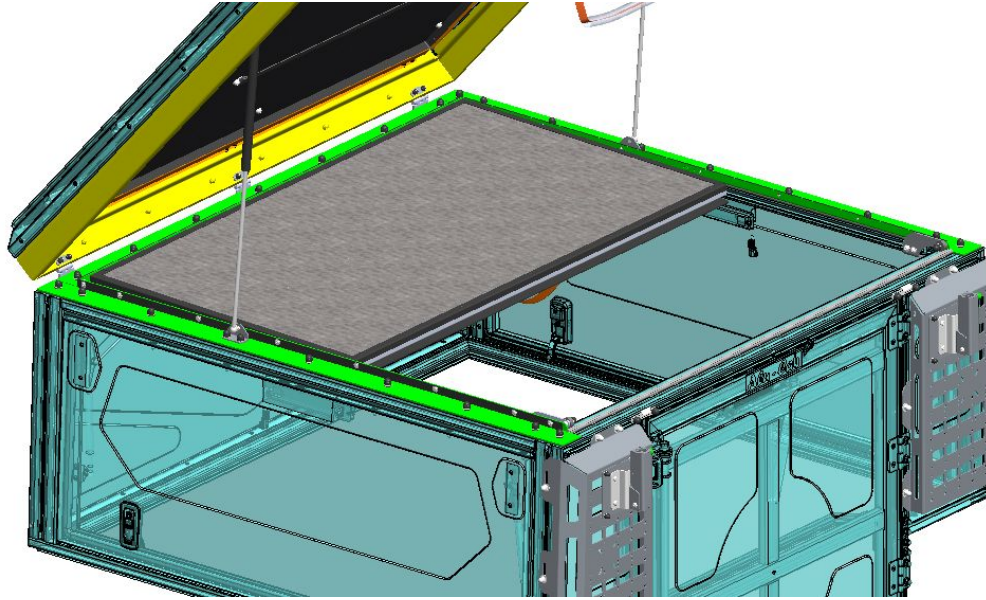


Remove Transport Bracket x2

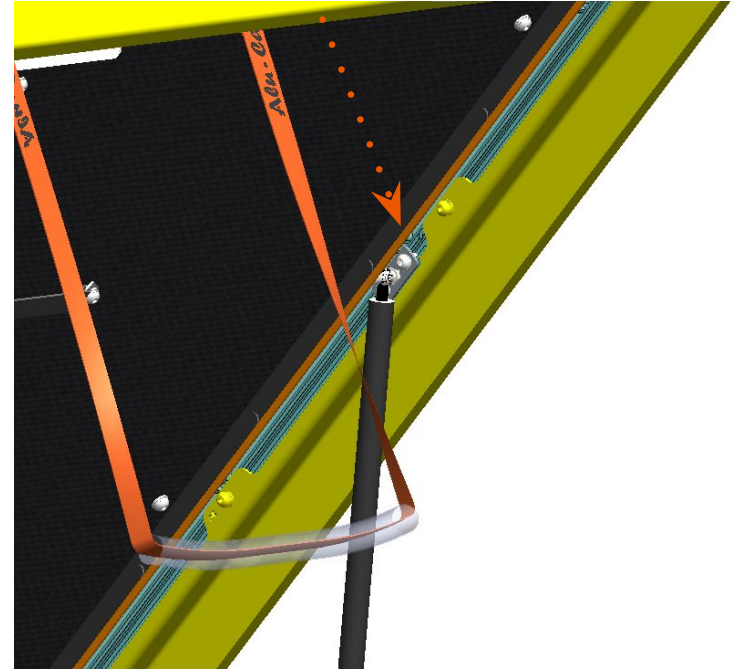
Installation Instructions

3

Next you will fit the gas struts supplied. if you are planning loading anything on the roof it is advised that you increase the strength of the gas struts to 500 nm. The position is set and cannot be moved as this will affect the canvas fitment.

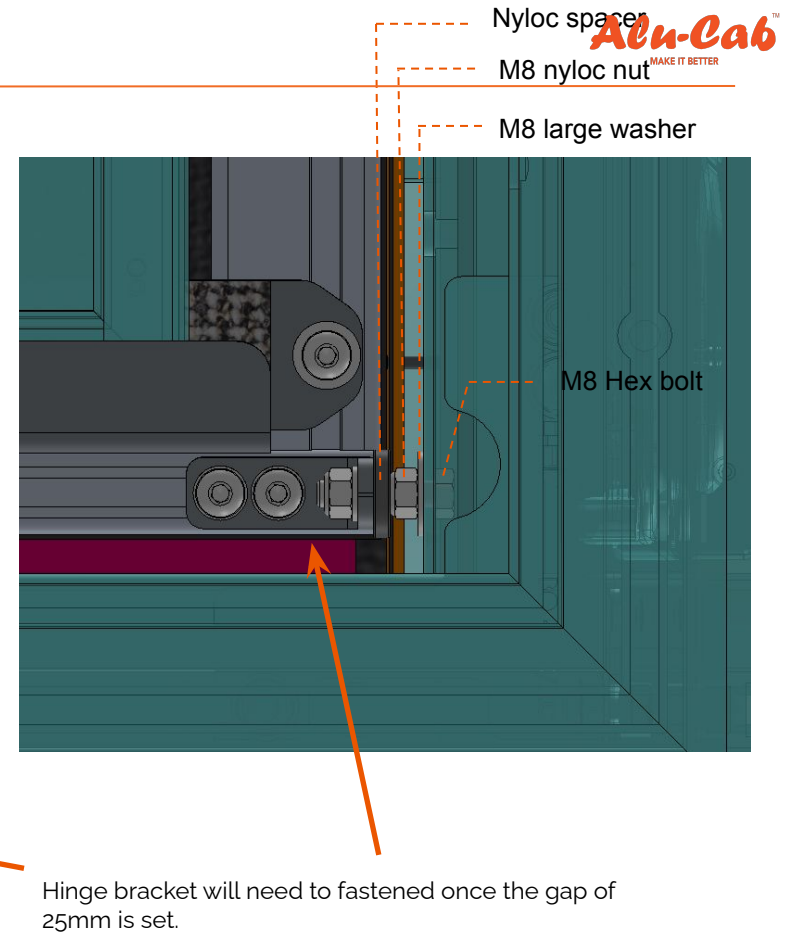
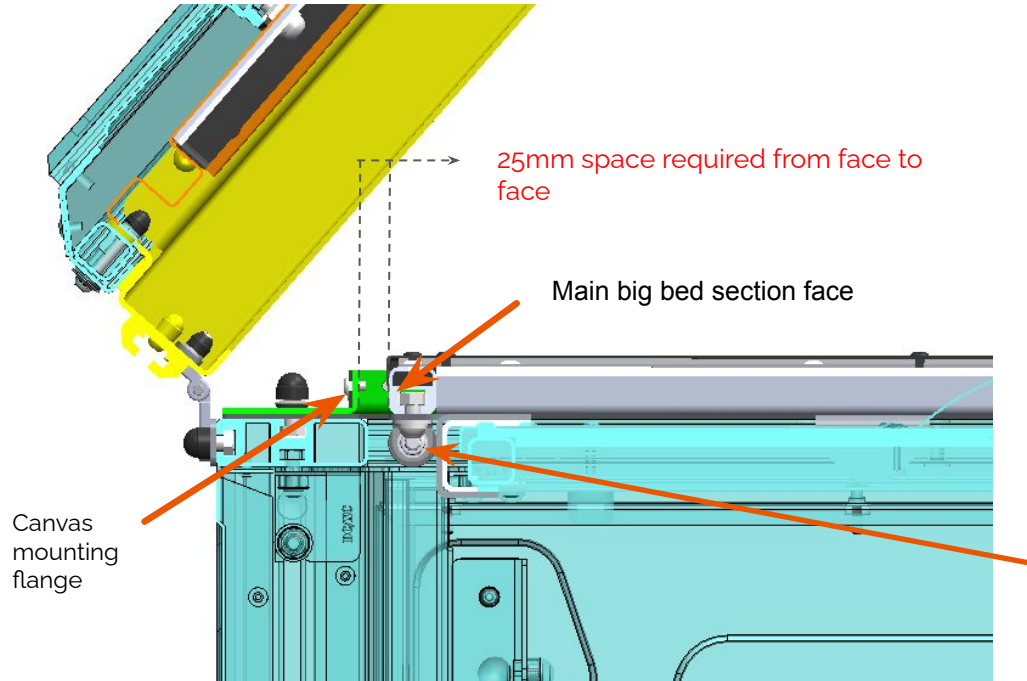


Fixed gas strut mounting position



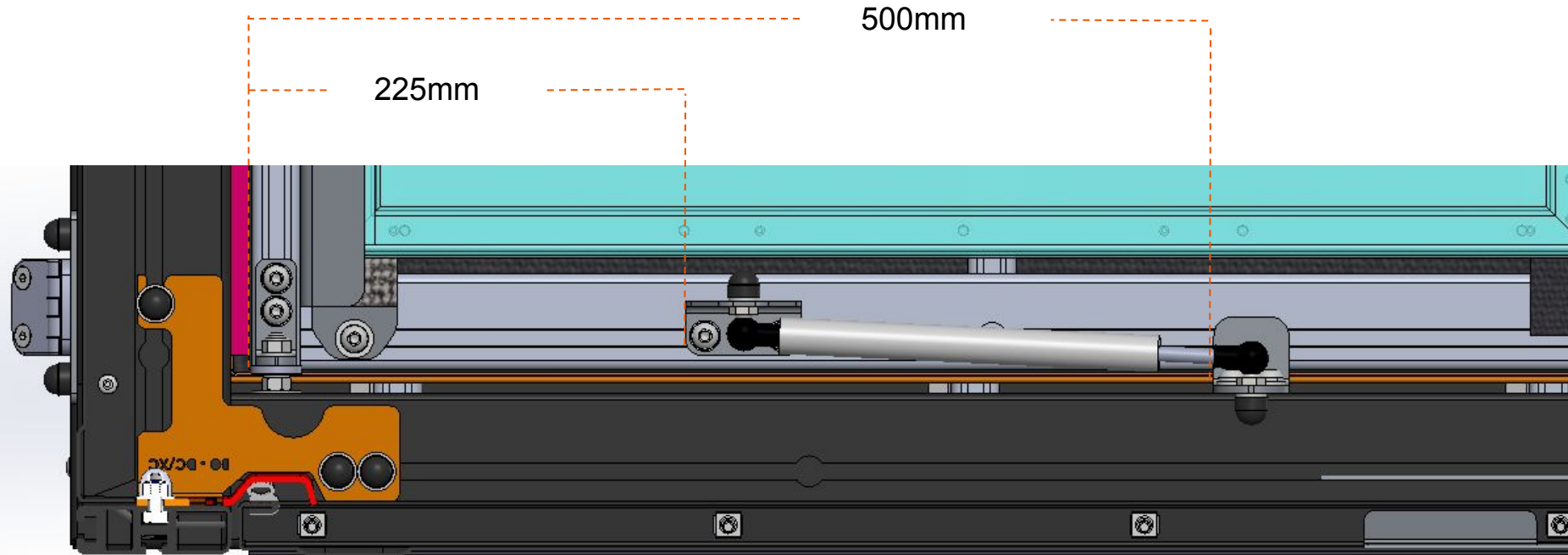
Installation Instructions

4 Position and fastening of the main bed section will be done before the gas struts are fitted. Once the bedsection is fixed in its correct position then the gas struts can be added as seen below and on the following page.



Installation Instructions

Big bedsection shock mounting bracket position:

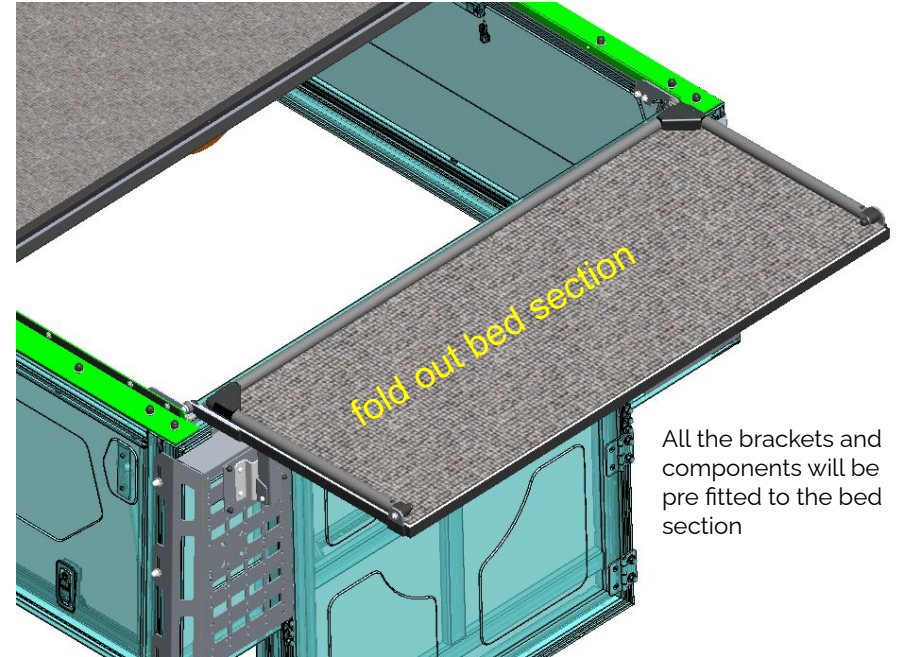
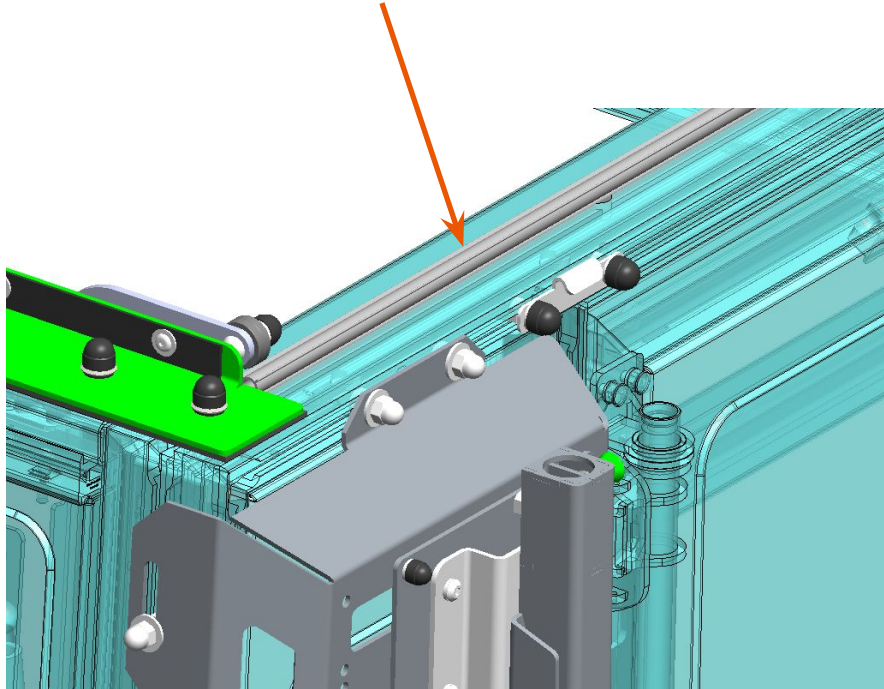


Installation Instructions

5

Fitting the fold out bed section

The rubber seal will need to be fitted into the nut slot of the base of the Modcap as seen below

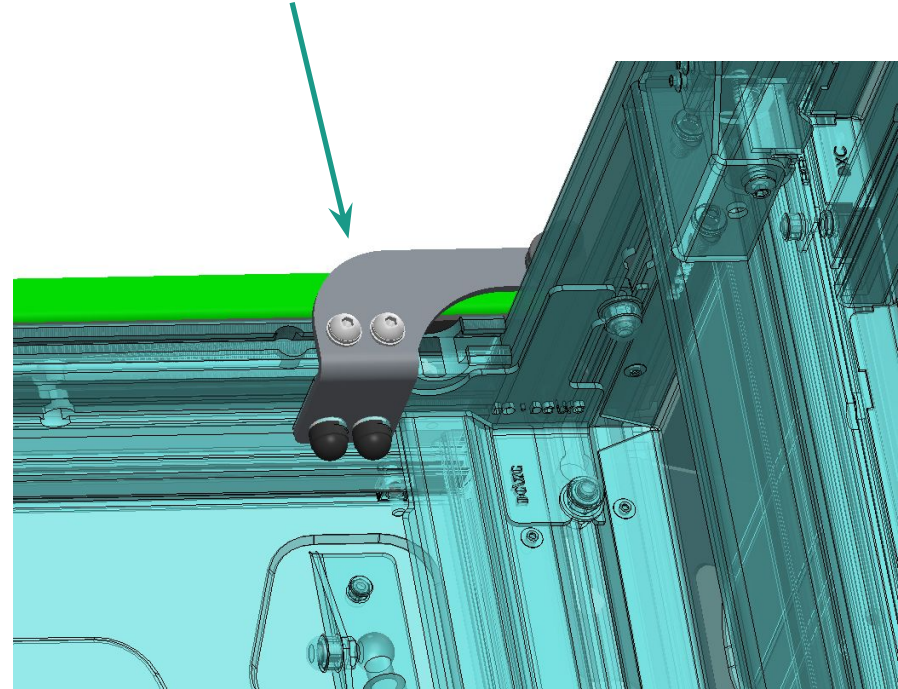
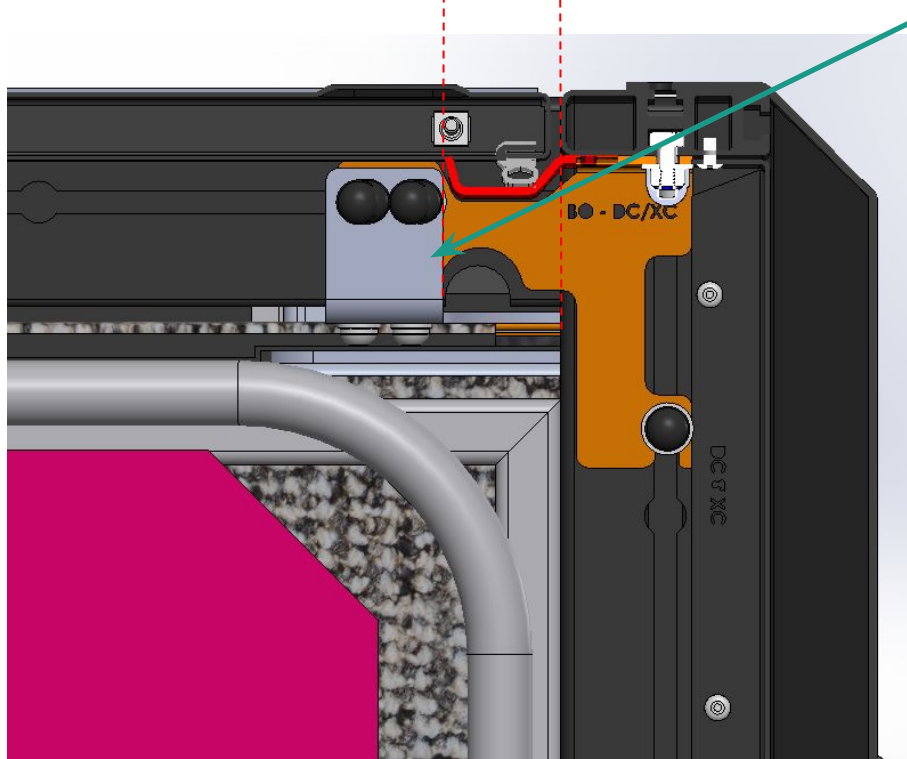


All the brackets and components will be pre fitted to the bed section

Installation Instructions

45mm

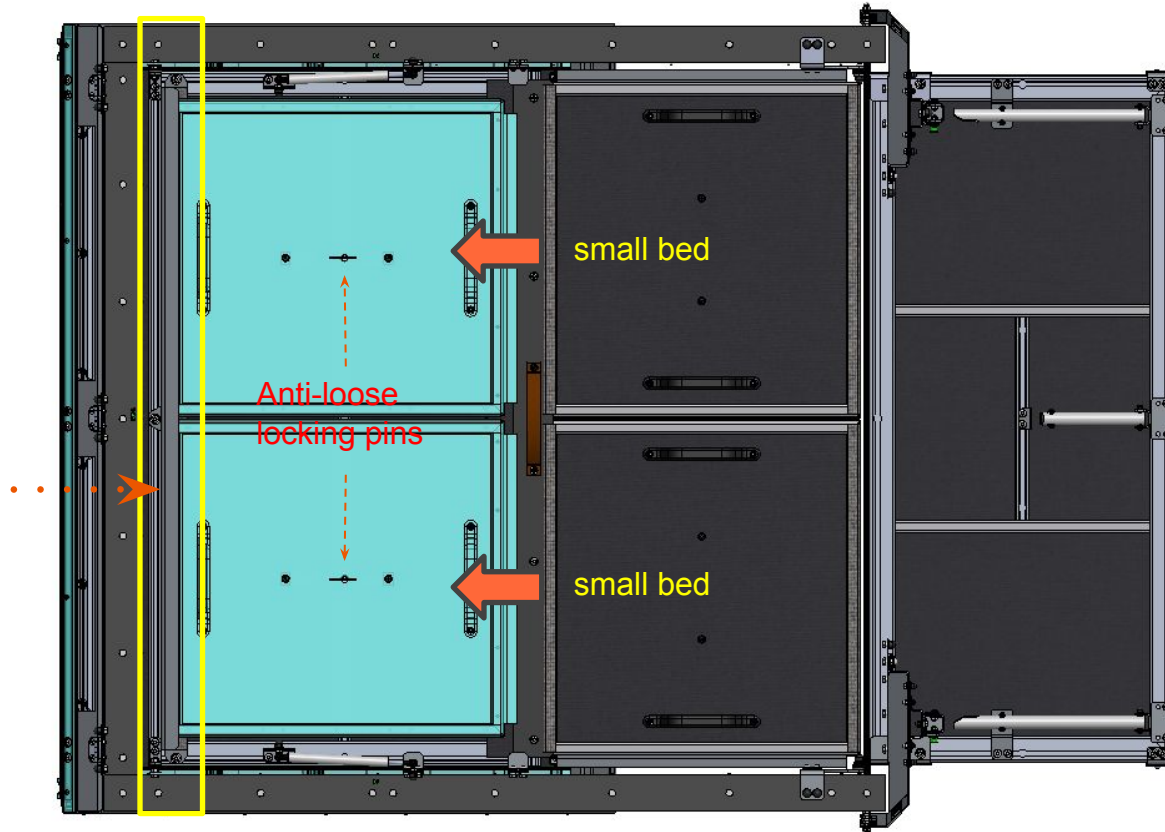
Fold out bed section internal bracket mounting position



Installation Instructions

6

Small bed section packing configuration



When removing the smaller bed sections from a sleeping position to store them under the main bigger bed section, rotate and slide the bed into the support brackets fixed to the bottom of the main big bed section and lock the smaller beds with the anti-loose locking pins as seen below.

Disclaimer

All rights reserved. No part of this website may be reproduced, translated, stored in a retrieval system, or transmitted, in any form or by any means, electronic, mechanical, photocopying, recording or otherwise, without prior written permission of the owner.

Review all instructions information carefully before installation.

Any damages, direct or incidental to the installer and/or property due to incorrect installation of any parts are the responsibility of the installer. Due to the various applications and fitment options available, the responsibility lies with the user to ensure all mounting points are secure and tight before every trip.

If unsure, consult with your Distributor regarding the operations of our products.

Users are advised to be mindful of the load they are carrying and drive in accordance with road conditions.

WARNING

Always wear appropriate PPE (Personal protection equipment) when fitting our products. Although the mounting kit is designed to be DIY, if you have any doubts or concerns, contact an accredited fitment centre to carry out the work. Alu-Cab will not be liable for any injury to persons, and/or damage to products and/or vehicles.

While Alu-Cab Holdings takes reasonable measures to ensure that the contents of this Website are accurate and complete, Alu-Cab Holdings makes no representations or warranties, whether express or implied, as to the quality, timeliness, operation, integrity, availability or functionality of this Website or as to the accuracy, completeness or reliability of any information on this Website. Alu-Cab Holdings reserves the right to make changes, corrections and/or improvements to the information and to the products and programs described in such information, at any time without notice.

Alu-Cab Holdings will use reasonable endeavours to maintain the availability of the Website, except during scheduled maintenance periods, and reserves the right to discontinue providing the Website or the service or any part thereof with or without notice to you. Any person who accesses this Website or relies on this Website or on the information contained in this Website does so at his or her own risk.

Occasionally, at our discretion, we may include or offer third-party products or services on our website. These third-party sites have separate and independent privacy policies. We therefore have no responsibility or liability for the content and activities of these linked sites. Nonetheless, we seek to protect the integrity of our site and welcome any feedback about these sites.