



FITMENT INSTRUCTIONS

Toyota Tundra 2022 (5,5ft & 6,5ft) Canopy Fitment Instruction

Preliminary Information

Installation and fitment instructions, tools required, fasteners and the hardware required are included in kit. Please follow the instructions and check installation actions with the images in this document.



Please be sure to lay out all parts provided on a table or flat surface in order to check that all required parts are accounted for and prevent potential frustration at a later stage.

Installation Instructions

1

Canopy Fitment – Tools, Fasteners & Materials The tables below show the equipment, i.e. tools and fasteners required to start the canopy fitment for a Toyota Tundra 2022.

1.1

Tools & Items Required

TOOL
Ratchet
13mm Socket
10mm Socket
13mm Ring Flat Spanner
10mm Ring Flat Spanner
5mm Allen Key/ Allen Key Bit

1.2

Mounting Bracket Fasteners Supplied (included with canopy)

ITEM	QTY	ITEM	QTY
M8x20mm Hex Bolt	12	M8 Oversized Washer	12
M8x30mm Hex Bolt	6	Elastic Band	6
M8 Plastic Nut Caps	36	M8 Nyloc Nuts	30
M8 Flat Washer	24	M8 Cup Square Bolts	12

Please be sure to lay out all parts provided on a table or flat surface in order to check that all required parts are accounted for and prevent potential frustration at a later stage.

Installation Instructions

1

Canopy Fitment – Tools, Fasteners & Materials The tables below show the equipment, i.e. tools and fasteners required to start the canopy fitment for a Toyota Tundra 2022.

1.3

Mounting Bracket Hardware Supplied

ITEM	QTY
Tundra 2022 Bottom Mount Bracket	6
Standard Shim Plate 01	24
Tundra 2022 Top Mounting Bracket	6
Tundra Nut Plate	6

1.4

Front Filler and Rear Tail Seal Fasteners Supplied (included with canopy)

ITEM	QTY
M6x20mm Button Head Bolt	7
M6 Oversized Flat Washer	14
M6 Nyloc Nuts	7
M6 Nut Caps	7

ITEM	QTY
M8 Flat Washer	6
M8 Spring Washer	6
M8 Hex Nut	6
M8x16mm Button Head Bolt	6

Please be sure to lay out all parts provided on a table or flat surface in order to check that all required parts are accounted for and prevent potential frustration at a later stage.

Installation Instructions

1

Canopy Fitment – Tools, Fasteners & Materials The tables below show the equipment, i.e. tools and fasteners required to start the canopy fitment for a Toyota Tundra 2022.

1.5

Front Filler and Rear Tail Seal

Hardware Supplied

ITEM	QTY
TUNDRA 22 FRONT FILLER RHS PANEL	1
TUNDRA 22 FRONT FILLER LHS PANEL	1
TUNDRA 22 TAILGATE SEAL	1

1.4

Optional Consumables Required

ITEM
Turpentine
Shop Rags
Black sealant, silicone or Sikaflex
Window Cleaner

Please be sure to lay out all parts provided on a table or flat surface in order to check that all required parts are accounted for and prevent potential frustration at a later stage.

Installation Instructions

2.1

Canopy Mounting Brackets Identification

Figures 1, 2 and 3 below illustrate the canopy mounting brackets and nut plates for the Tundra 2022 Canopy

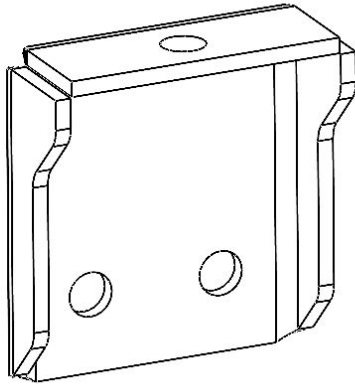


Fig 1. Bottom Mounting Bracket

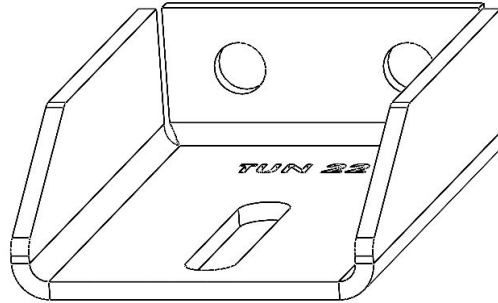


Fig 2. Top Mounting Bracket

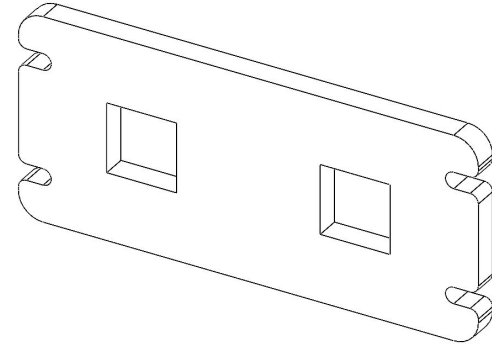


Fig 3. TT-NUT Plate

Installation Instructions

2.2

Canopy Mounting Brackets Fastener Identification

Figure 4 below illustrates the canopy mounting brackets with the fasteners needed. Please refer to the table to identify everything correctly.

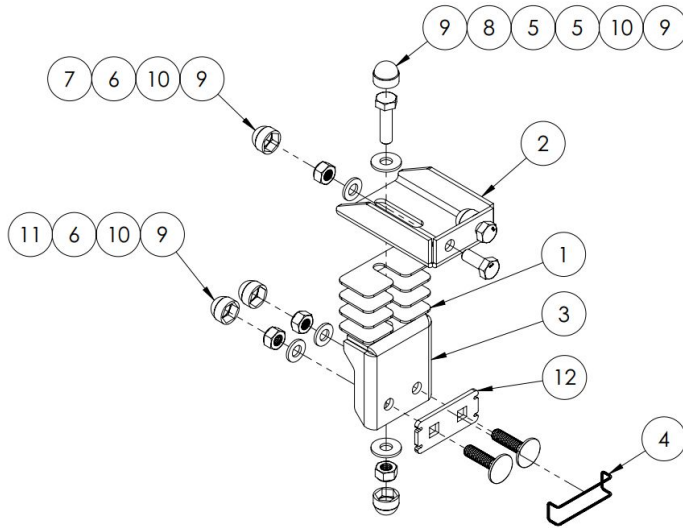


Fig 4. Assembled Mounting Bracket

ITEM No.	DESCRIPTION	QTY
1	SHIM PLATE 2	24
2	TUNDRA 2022 TOP MOUNTING BRACKET	6
3	TUNDRA 2022 BOT MOUNT BRACKET	6
4	ELASTIC BAND NO.6	6
5	M8 OVERSIZED WASHER	12
6	M8 FLAT WASHER	24
7	M8x20 HEX BOLT	12
8	M8x30 HEX BOLT	6
9	M8 NUT CAP	36
10	M8 NYLOC NUT S/S	30
11	M8x30 CUP SQ BOLT	12
12	NUT PLATE	6

Installation Instructions

2.4

Canopy Front Filler Panels and Tail Seal Identification

Figures 5, 6 and 7 below illustrate the canopy front filler panels and tail seal for the Tundra 2022 Canopy



Fig 5. TUNDRA 22 FRONT
FILLER RHS PANEL

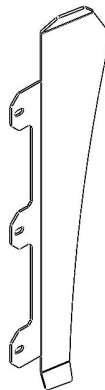


Fig 6. TUNDRA 22 FRONT
FILLER LHS PANEL

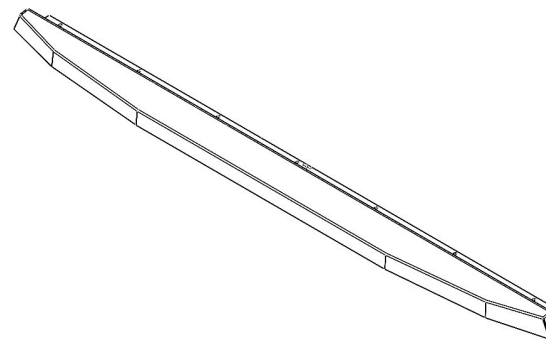


Fig 7. TUNDRA 22 TAILGATE
SEAL

Installation Instructions

3.1

Canopy Installation - Front Filler and Tailgate Seal Fitment

Before placing the canopy onto the load bin, check that the D-Rubber seal running the bottom perimeter of the canopy is intact.

Place the canopy on a table that allows access to the front and rear of the canopy.

Layout the fasteners for the rear tailgate seal.

1. Secure the tailgate **[1]** to the rear door **[2]** of the canopy. Line up the slots in the tailgate with the slots in the canopy door. Push the M6 Button Head Bolt **[3]** with the oversized washer **[4]** through the bottom and use the second oversized flat washer **[5]** and nyloc nut **[6]** to catch it. Partially tighten nut and bolt. Repeat this in all seven locations. The nut cap will be fitted at a later stage **[7]**

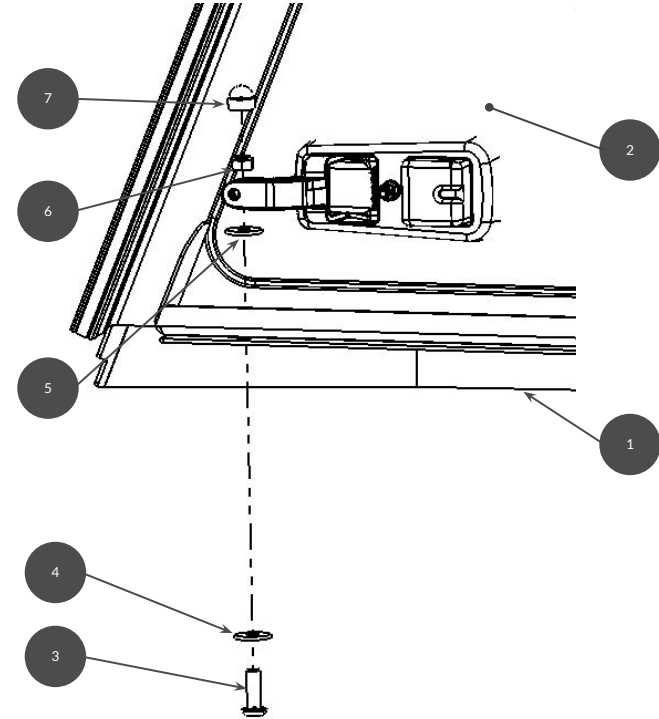


Fig 8. Tailgate Mounted to Rear Door

Installation Instructions

3.1

Canopy Installation - Front Filler and Tailgate Seal Fitment

Layout the fasteners for the front filler plates.

1. Secure the front filler plate (RHS) **[1]** to the nut slot frame **[2]** of the canopy. Place three hex nuts into the nut slot and align them with the slots on the front filler plate. Push the M8 Button Head **[3]**, M8 Spring Washer **[4]**, M8 Flat Washer **[5]** through the slot in the front filler plate and let it catch the hex nut in the nut slot. Repeat this process for the three slots on each front filler plate. Adjust the height of the front filler plate so that the top edge aligns with the top edge of the canopy. Tighten the M8 Button Heads down completely once the front filler is at the correct height. Repeat this process on the opposite side.

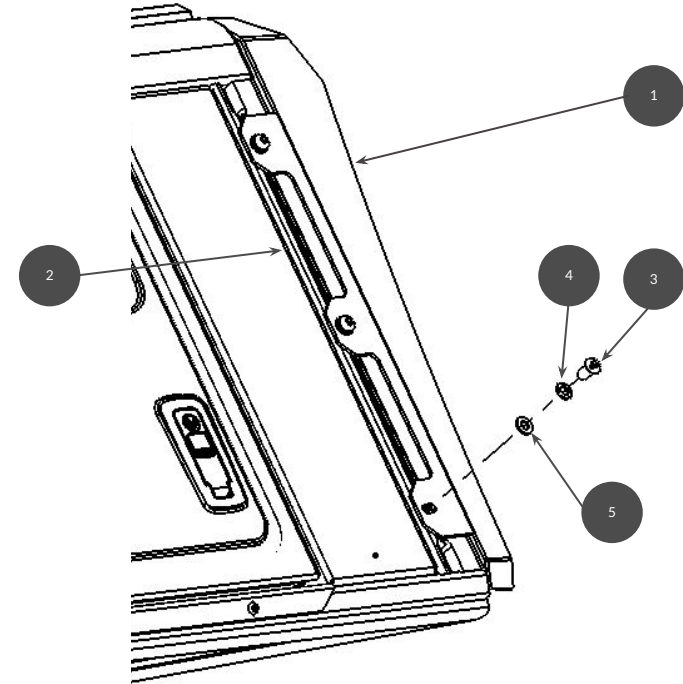


Fig 9. Front Filler Plate Mounted to the Canopy Nut Slot Frame

Installation Instructions

3.2

Canopy Installation - To Vehicle Load Bin

Lift the canopy and place it onto the load bin. Ensure that the canopy is centered on the load bin by checking that the spacing is the same on the left and right.

Test the rear door of the canopy to ensure that the doors tail seal seats and compresses properly on the vehicle's tailgate. When the door is opened there will be a little resistance however this will be overcome once the door has moved beyond a 5-degree angle. Reposition the canopy along the length of the load bin if the rear door does not open and close smoothly.

With the canopy in the correct position the mounting brackets can be fitted, and the canopy can be secured.

Installation Instructions

3.3

Installing the Mounting Brackets.

1. Assemble six nut plate assemblies
2. Slide the nut plate assemblies into the rail on the Tundra Load bin. 3 off in the right-hand side rail and 3 off in the left-hand side rail. Ensure to space the nut plates out so that there is one on either side of the rail and one in the middle of the rail.

1



Fig 10. Nut plate assembly with elastic and cup squares

2



Fig 11. Rails on Tundra Load Bin

Installation Instructions

3.2

3. Fit the bottom mounting brackets over the cup square bolts and fasten them down using the supplied M8 Nylock nuts and M8 Washers.
4. Slide 12 off M8x20 bolts into the bottom nut slot frame of the canopy (6 off in the right side, 6 off in the left side) and have them roughly align with the bottom mounting brackets.

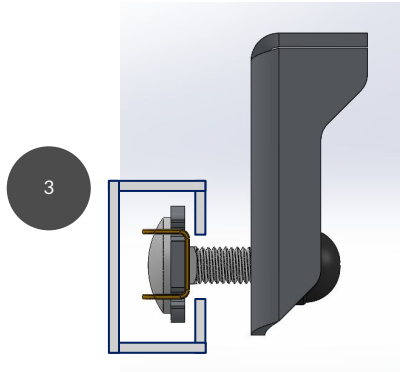


Fig 12. Fit bottom brackets over nut plate assemblies in tundra rails

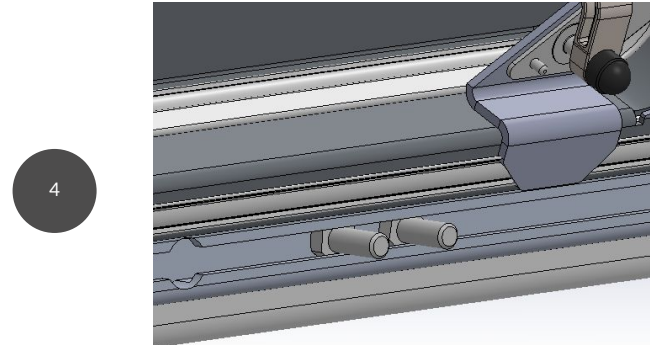


Fig 13. M8x20 Bolts in the Canopy's Bottom Nut Slot Rails

Installation Instructions

3.2

5. Fit the top mounting bracket to the M8x20 bolts and use the supplied M8x30 bolt as a guide to ensure the top and bottom bracket line-up. Fasten the bracket to the canopy frame using the supplied M8 Nylock Nuts and M8 washers.
6. Fit enough shims in between the top and bottom brackets and then squeeze and extra shim in by lifting the canopy. This will allow the canopy to rest solely on the mounting brackets.
7. Use the M8x30 bolt to secure the top mount bracket to the bottom mount bracket and your fitment is complete.

Canopy Frame with Hex bolts fitted

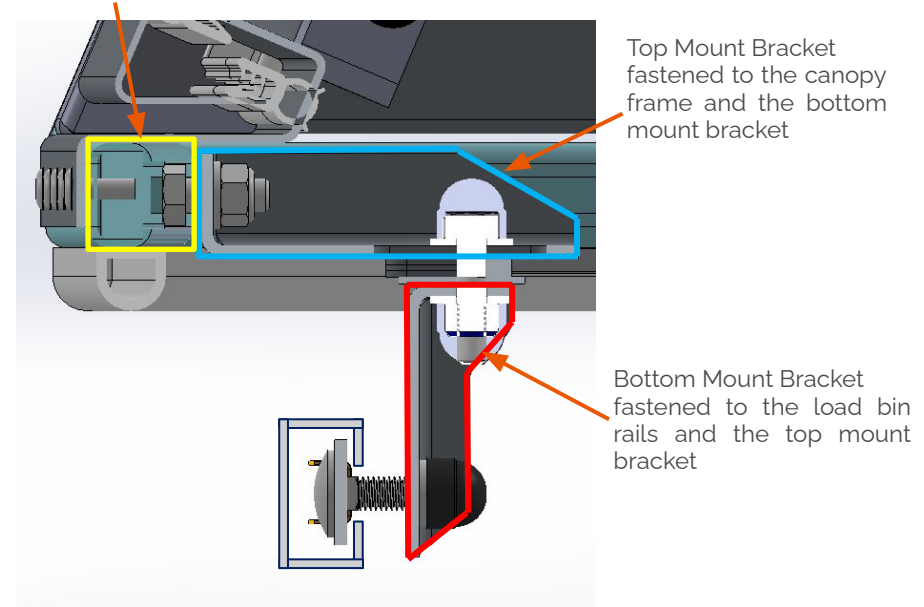


Fig 14. Fully Assembled Mounting Bracket
Fastened to Canopy Frame

Disclaimer

All rights reserved. No part of this website may be reproduced, translated, stored in a retrieval system, or transmitted, in any form or by any means, electronic, mechanical, photocopying, recording or otherwise, without prior written permission of the owner.

Review all instructions information carefully before installation.

Any damages, direct or incidental to the installer and/or property due to incorrect installation of any parts are the responsibility of the installer. Due to the various applications and fitment options available, the responsibility lies with the user to ensure all mounting points are secure and tight before every trip.

If unsure, consult with your Distributor regarding the operations of our products.

Users are advised to be mindful of the load they are carrying and drive in accordance with road conditions.

WARNING

Always wear appropriate PPE (Personal protection equipment) when fitting our products. Although the mounting kit is designed to be DIY, if you have any doubts or concerns, contact an accredited fitment centre to carry out the work. Alu-Cab will not be liable for any injury to persons, and/or damage to products and/or vehicles.

While Alu-Cab Holdings takes reasonable measures to ensure that the contents of this Website are accurate and complete, Alu-Cab Holdings makes no representations or warranties, whether express or implied, as to the quality, timeliness, operation, integrity, availability or functionality of this Website or as to the accuracy, completeness or reliability of any information on this Website. Alu-Cab Holdings reserves the right to make changes, corrections and/or improvements to the information and to the products and programs described in such information, at any time without notice.

Alu-Cab Holdings will use reasonable endeavours to maintain the availability of the Website, except during scheduled maintenance periods, and reserves the right to discontinue providing the Website or the service or any part thereof with or without notice to you. Any person who accesses this Website or relies on this Website or on the information contained in this Website does so at his or her own risk.

Occasionally, at our discretion, we may include or offer third-party products or services on our website. These third-party sites have separate and independent privacy policies. We therefore have no responsibility or liability for the content and activities of these linked sites. Nonetheless, we seek to protect the integrity of our site and welcome any feedback about these sites.