

Alu-CabTM

MAKE IT BETTER

FITMENT INSTRUCTIONS

DRIVE-OFF BASE

CC2-A-DOB

DISCLAIMER

Preliminary information

All rights reserved. No part of this document may be reproduced, translated, stored in a retrieval system. Or transmitted, in any form or by any means, electronic, mechanical, photocopying, recording or otherwise, without prior written permission of the owner.

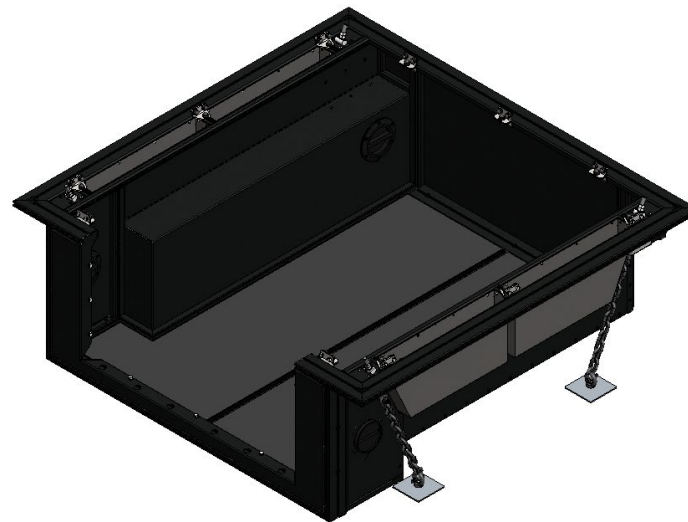
Review all instruction information carefully before installation.

Any damages, direct or indirect to the installer and/or property due to incorrect installation of any parts are the responsibility of the installer.

Due to the various application and fitment options available, the responsibility lies with the user to ensure all mounting points are secure and tight before every trip. If unsure, consult with your Distributor regarding the operations of our products.

Users are advised to be mindful of the load they are carrying and drive in accordance with road conditions.

Please note that the **Drive-Off Base is not compatible with Chevrolet Colorado and GMC Canyon**, due to manufacturer restrictions.



Service Enquiries email
queries@alu-cab.com

Installation Instructions

The tables below show the equipment, i.e. tools and fasteners required to install the **QUICK RELEASE BRACKETS**

Tools & Items Required
12mm Drill Bit & Drill
13mm Socket, Wrench & Spanner
19mm Socket, Wrench & Spanners
Anti-Rust Paint/Spray



Lay out all parts provided on a table or flat surface, to ensure that all required parts are accounted for,

Fasteners Supplied	Qty
M8x20 HEX BOLT	52
M8x16mm FLAT WASHER S/S - DIN 125	57
M8 NYLOC NUT	52
M8 NUT CAP	57
M10 D-SHACKLE	8
M12 EYE BOLT	4
M12 EYE NUT	4
M12x30 HEX BOLT	4
M12 SPRING WASHER S/S	4
M12x24 FLAT WASHER S/S - DIN 125	4
M12 NUT	8
Ø10mm GALVANISED CHAIN (12 LINKS)	4

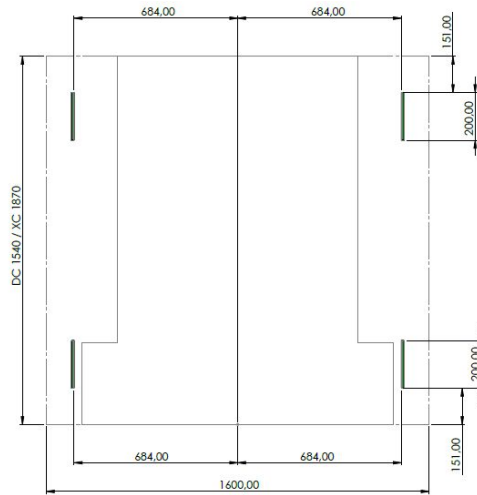
Installation Instructions

STEP
1

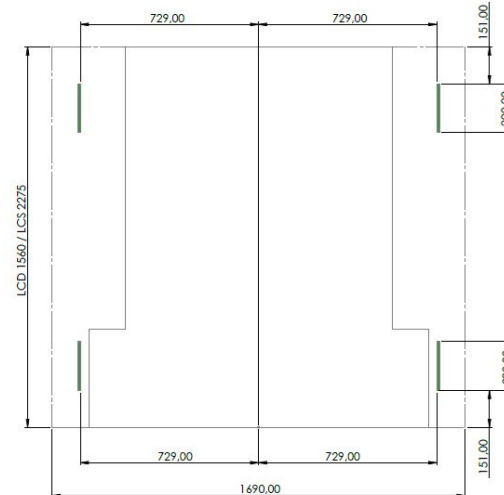
Prepare the loadbin for the Drive-Off Base mounting points. Refer to the below graphic for the recommended mounting range (shown in green) for the Drive-Off Base. It is recommended to mark out the load bed on the top, and inspect the bottom of the load bed for any potential interferences.

Where possible, align the mounting point with a structural member of the chassis for additional strength. If not feasible make use of the 120x120mm load bed spacer plate that is provided, ensuring that there is no interference for the plate to sit flush against the load bed underside.

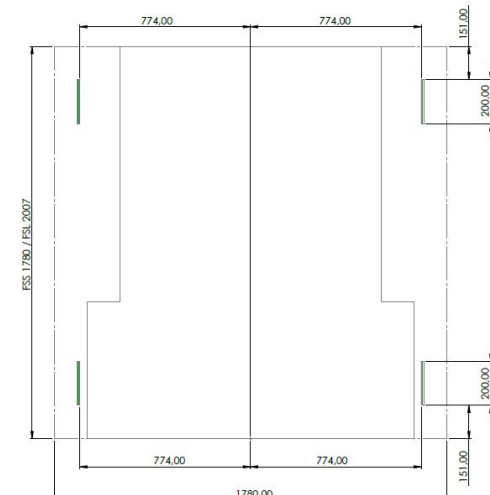
DC / XC Mounting Range



LCD / LCS Mounting Range



FSS / FSL Mounting Range



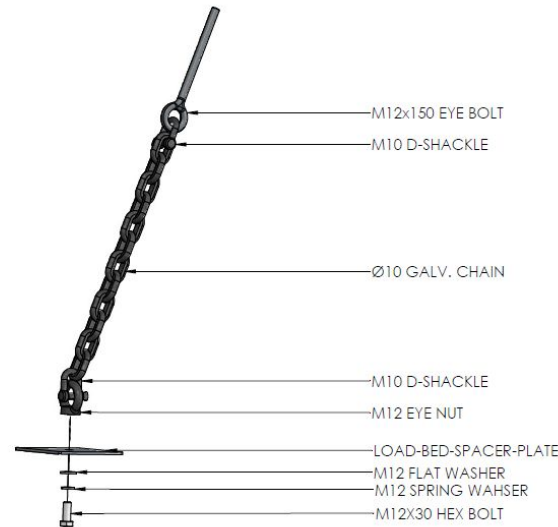
Installation Instructions

STEP 2

Once the 4 mounting points have been identified that fall within the recommended area, proceed to drill a 12mm hole in the load bed, for mounting the M12 eye-nut. Spray/Paint the 12mm hole with anti-rust solution, as preventative measure.

From the bottom of the load bed, place the 120x120mm spacer plate (if used), install the M12x30 Hex Bolt, M12 Spring Washer and M12 Washer up into the load bed, that the thread protrudes into the load bed. Fasten the M12 Eye Nut onto the M12x30 Hex Nut that protrudes into the load bed. **Do not exceed 80N.m. torque for the M12 fastener. It is advised to make use of [Loctite 242](#) on the M12x30 Hex Bolts** to mitigate vibration loosening.

Install the M10 D-Shackles, Ø10 Galvanized Chain and M12x140 Eye Bolt as shown in the below configuration, for each of the four (4) mounting points.



Installation Instructions

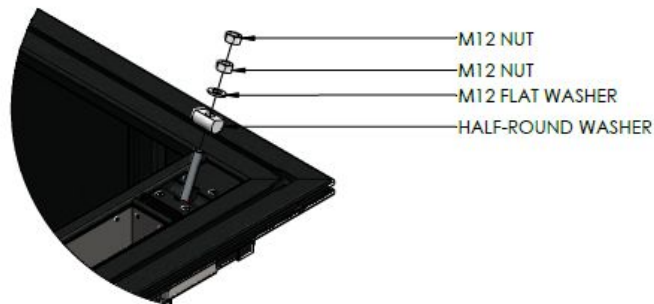
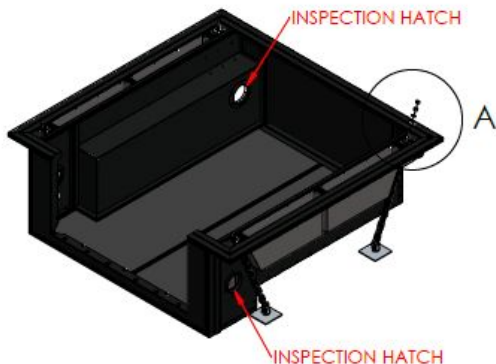
STEP
3

In preparation for placing the Drive-Off Base, clear the mounting assembly fitted in Step 2 to the sides, and open the inspection hatches on the base.

Lift the Drive-Off Base onto the load bed of the vehicle. Ensure that it is centred in the middle of the load bed, and that the front face of the Drive-Off Base is seated up against the front of the load bed.

Locate and feed the mounting assembly through the mounting blocks that are located in each corner. Ensure that the M12 Eye Bolt passes through the silicone membrane to aid ingress protection. **It will be necessary to observe the length of the chain, assess whether it will be necessary to shorten the length of the chain.** When making this assessment, **ensure that the chain is not tensioned in an awkward way that may cause a false indication.**

Fasten the M12 Eye Bolt by fitting the Half-Round Washer, M12 Washer and 2 x M12 Nuts. Tighten down the nuts gradually, ensuring equal tension between all four corners. Lock the M12 Nuts against each other, once a satisfactory tension has been achieved.



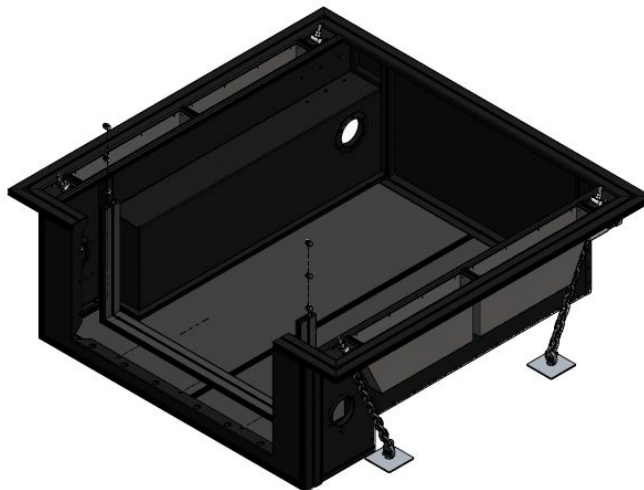
Installation Instructions

STEP
4

In preparation for the installation of the ModCAP Base, it will be necessary to fit the U-Frame to the Drive-Off Base first. Insert 3 x M8x20 Hex Bolts, 3 x M8 Washers and 3 x M8 Nyloc Nuts into the LHS, Bottom and RHS of the U-Frame and align roughly with the Drive-Off Base Rear Panel cut-outs.

Slide the U-Frame assembly backwards into place, and ensure that it seats against the bottom of the Drive-Off Base Rear Panel.

Before tightening these fasteners, the ModCAP base must be fitted onto the Drive-Off Base, and the U-Frame secured to the ModCAP, to ensure an uncompromised fitment of the rear door. **Refer to the ModCAP Fitment Instruction for these particular steps detail.** Follow until Step 7 for tightening instructions on the U-Frame fasteners.

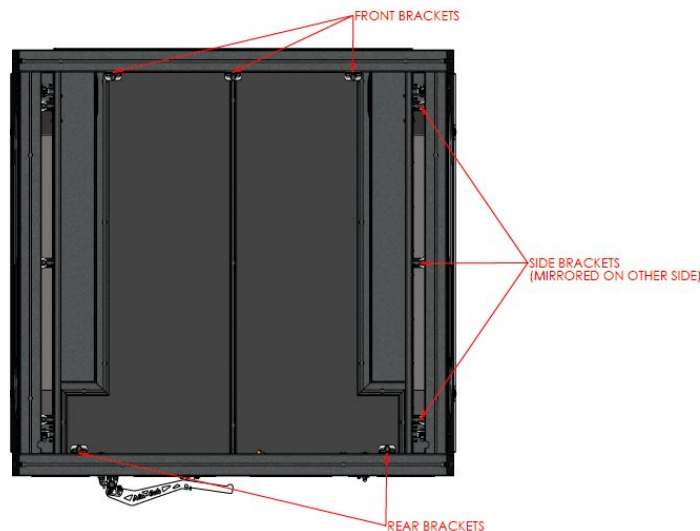


Installation Instructions

STEP 5

With the ModCAP Base fitted to the Drive-Off Base, with the U-Frame and Door assembled, the mounting kit can be fitted which fastens the two units to each other. There are two types of mounting brackets, which are fitted to the sides and front/rear respectively.

The side bracket positions correspond with the short nut-slots on either side of the canvas bags. Whereas the front/back bracket positions should be distributed evenly across the front frame.

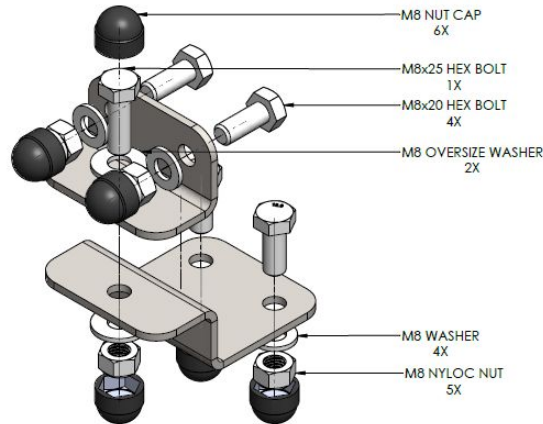


Installation Instructions

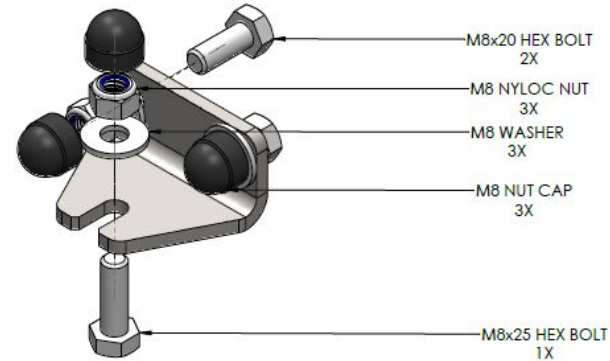
STEP
6

Below is shown the exploded view of the two types of brackets. Both brackets are designed to bottom out at 70% compression of the rubber between the ModCAP Base and the Drive-Off Base. Ensure that the mounting brackets are tightened gradually, to evenly compress the ModCAP Base onto the Drive-Off Base. **Do not exceed 17N.m. torque for the M8 Hex Bolts.**

Front/Rear Mounting Brackets



Side Mounting Brackets



Installation Instructions

STEP
7

Below shows the mounting brackets in the installed configuration.

Following the fastening of the mounting brackets, the U-Frame fasteners can be tightened that were installed in Step 4. Seal between the U-Frame and the Drive-Off Base using [SIKA 552 AT](#). Identify any additional areas that may require sealing to ensure a water and dust tight unit.



Installation Instructions

STEP
8

Following the above Steps will ensure a successful installation of the Drive-Off Base to the ModCAP Base. Ensure that all fasteners are tightened to the correct specification. **Prior to undertaking a trip, ensure that all the fasteners are tight as per specification.**



DISCLAIMER



All rights reserved. No part of this website may be reproduced, translated, stored in a retrieval system, or transmitted, in any form or by any means, electronic, mechanical, photocopying, recording or otherwise, without prior written permission of the owner.

Review all instructions information carefully before installation.

Any damages, direct or incidental to the installer and/or property due to incorrect installation of any parts are the responsibility of the installer. Due to the various applications and fitment options available, the responsibility lies with the user to ensure all mounting points are secure and tight before every trip.

If unsure, consult with your Distributor regarding the operations of our products.

Users are advised to be mindful of the load they are carrying and drive in accordance with road conditions.

WARNING

Always wear appropriate PPE (Personal protection equipment) when fitting our products. Although the mounting kit is designed to be DIY, if you have any doubts or concerns, contact an accredited fitment centre to carry out the work. Alu-Cab will not be liable for any injury to persons, and/or damage to products and/or vehicles.

While Alu-Cab Holdings takes reasonable measures to ensure that the contents of this Website are accurate and complete, Alu-Cab Holdings makes no representations or warranties, whether express or implied, as to the quality, timeliness, operation, integrity, availability or functionality of this Website or as to the accuracy, completeness or reliability of any information on this Website. Alu-Cab Holdings reserves the right to make changes, corrections and/or improvements to the information and to the products and programs described in such information, at any time without notice.

Alu-Cab Holdings will use reasonable endeavours to maintain the availability of the Website, except during scheduled maintenance periods, and reserves the right to discontinue providing the Website or the service or any part thereof with or without notice to you. Any person who accesses this Website or relies on this Website or on the information contained in this Website does so at his or her own risk.

Occasionally, at our discretion, we may include or offer third-party products or services on our website. These third-party sites have separate and independent privacy policies. We therefore have no responsibility or liability for the content and activities of these linked sites. Nonetheless, we seek to protect the integrity of our site and welcome any feedback about these sites.