



FITMENT INSTRUCTIONS

Braai Grid Holder

Installation Instructions

Preliminary information

Installation and fitment instructions includes the tools required, fasteners included in the kit, and the hardware included in the kit.

Please follow the instructions and check installation steps with the images in this document.

Alu-Cab recommends that all sealing work is allowed to cure for 24 hours, after which you may drive the vehicle on normal paved roads. Before driving off-road with your Alu-Cab product or operating your roof conversion, an additional cure period of 48 hours is required.

Failure to follow these instructions will void your warranty. Please ensure that you follow the sealant manufacturers curing time as per their technical data sheet.

These times may differ slightly from the times we have recommended.



Service Enquiries email
queries@alu-cab.com

Installation Instructions

Braai Grid Holder Fitment – Tools, Fasteners & Hardware

1.1

Tools & Items Required

| |
|------------------|
| Rivet Gun |
| Knife |
| Insulation Tape |
| M10 Spanner |
| Size 4 Allen key |

1.2

Hardware Supplied (included with Braai Grid Holder kit)

| | |
|----------------------------|---|
| Bungee Cord (600mm length) | 2 |
| Strap with cam buckle | 1 |
| 470-GRID-HLDR-01-02 | 1 |
| 4.8 X 15 Black Rivet | 2 |



Figure 1: 470-GRID-HLDR-01-02

Installation Instructions

2.

Assembling the Braai Grid Holder Kit

STEP
1

Welding the Frame Base

For this first step, the main frame base - 470-GRID-HLDR-01-02 needs to be seam welded along the following edges: **(send to powder coating for Black after)**

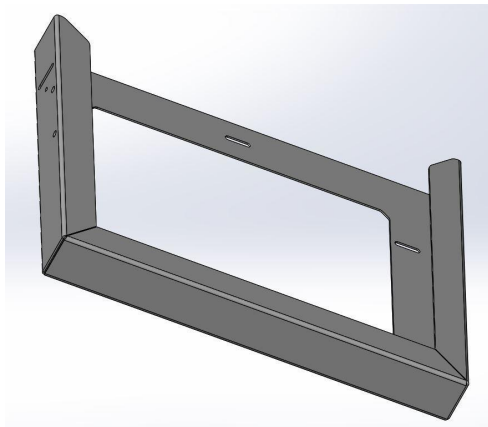


Figure 2: Weld Edge 1

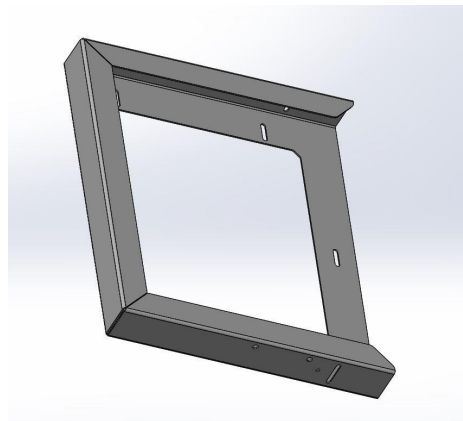


Figure 3: Weld Edge 2

Installation Instructions

STEP
2

Fastening the Strap

The next step is to fasten the Cam Buckle Strap to the frame. This will be done by Riveting the strap with 2 washers on either end to the frame to secure it, as shown below:

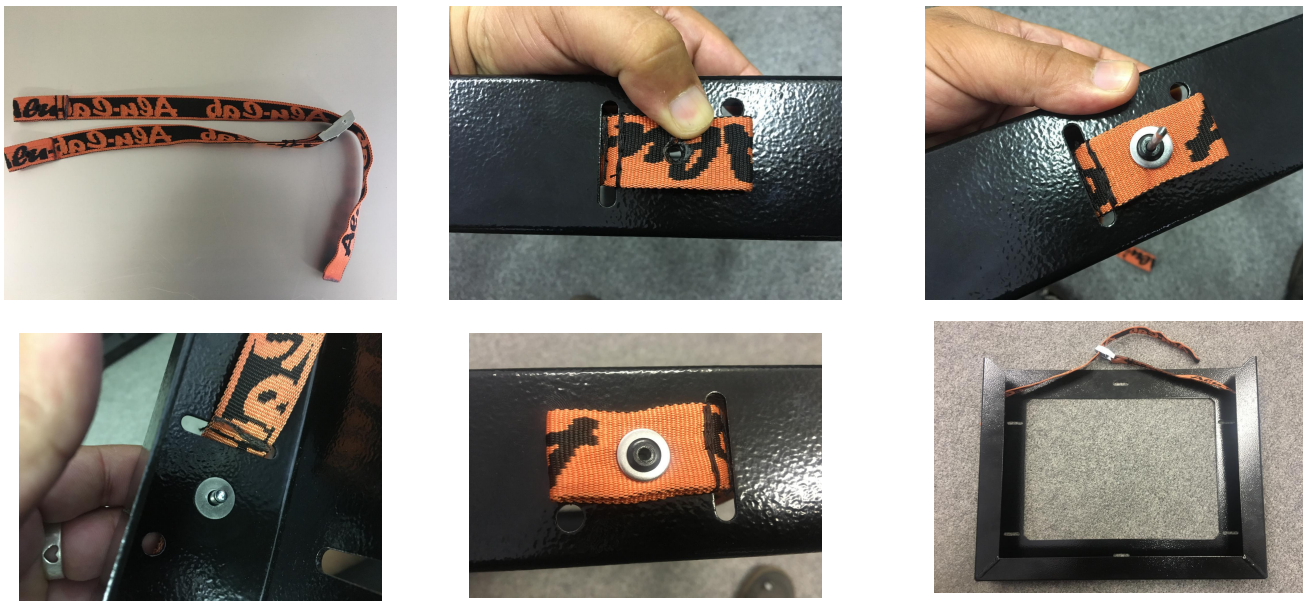


Figure 4-9: Strap Fitment

Installation Instructions

STEP
3

Attaching the Bungee Cord

The last step is to tie the Bungee Cord through the provided holes as shown below. You simply thread the Bungee Cord through either side of the frame from the inside out. You then pull the Bungee Cord taught, but with some elasticity left, and tie a single knot both sides to fasten it and keep tension. Insulation tape is wrapped around the edges to keep the Cord from fraying at the ends.



Figure 10: Threading the Bungee Cord Into the Frame



Figure 11: Bungee Cord Threaded Through Frame Ready to Tie

Installation Instructions



Figure 12: Insulation Taped Ends

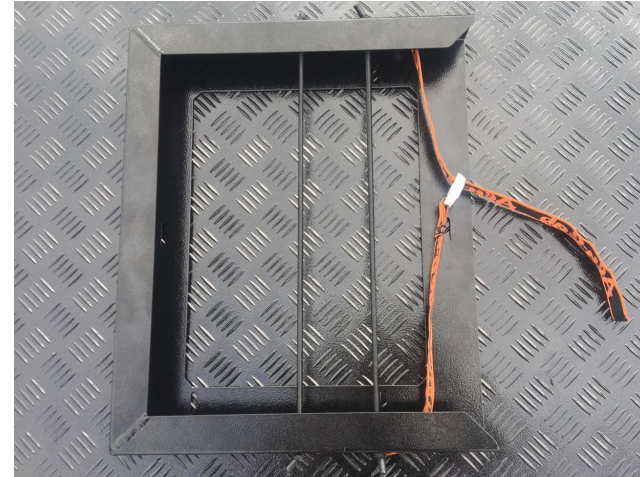


Figure 13: Complete Braai Grid Holder

Disclaimer

All rights reserved. No part of this website may be reproduced, translated, stored in a retrieval system, or transmitted, in any form or by any means, electronic, mechanical, photocopying, recording or otherwise, without prior written permission of the owner.

Review all instructions information carefully before installation.

Any damages, direct or incidental to the installer and/or property due to incorrect installation of any parts are the responsibility of the installer. Due to the various applications and fitment options available, the responsibility lies with the user to ensure all mounting points are secure and tight before every trip.

If unsure, consult with your Distributor regarding the operations of our products.

Users are advised to be mindful of the load they are carrying and drive in accordance with road conditions.

WARNING

Always wear appropriate PPE (Personal protection equipment) when fitting our products. Although the mounting kit is designed to be DIY, if you have any doubts or concerns, contact an accredited fitment centre to carry out the work. Alu-Cab will not be liable for any injury to persons, and/or damage to products and/or vehicles.

While Alu-Cab Holdings takes reasonable measures to ensure that the contents of this Website are accurate and complete, Alu-Cab Holdings makes no representations or warranties, whether express or implied, as to the quality, timeliness, operation, integrity, availability or functionality of this Website or as to the accuracy, completeness or reliability of any information on this Website. Alu-Cab Holdings reserves the right to make changes, corrections and/or improvements to the information and to the products and programs described in such information, at any time without notice.

Alu-Cab Holdings will use reasonable endeavours to maintain the availability of the Website, except during scheduled maintenance periods, and reserves the right to discontinue providing the Website or the service or any part thereof with or without notice to you. Any person who accesses this Website or relies on this Website or on the information contained in this Website does so at his or her own risk.

Occasionally, at our discretion, we may include or offer third-party products or services on our website. These third-party sites have separate and independent privacy policies. We therefore have no responsibility or liability for the content and activities of these linked sites. Nonetheless, we seek to protect the integrity of our site and welcome any feedback about these sites.