

# Alu-Cab<sup>TM</sup>

**MAKE IT BETTER**

---

## **FITMENT INSTRUCTIONS**

**S-Type Awning Strap**

# DISCLAIMER

## Preliminary information

All rights reserved. No part of this document may be reproduced, translated, stored in a retrieval system. Or transmitted, in any form or by any means, electronic, mechanical, photocopying, recording or otherwise, without prior written permission of the owner.

Review all instruction information carefully before installation.

Any damages, direct or indirect to the installer and/or property due to incorrect installation of any parts are the responsibility of the installer.

Due to the various application and fitment options available, the responsibility lies with the user to ensure all mounting points are secure and tight before every trip. If unsure, consult with your Distributor regarding the operations of our products.

Users are advised to be mindful of the load they are carrying and drive in accordance with road conditions.



Service Enquiries email  
[queries@alu-cab.com](mailto:queries@alu-cab.com)

# Installation Instructions

The tables below show the equipment, i.e. tools and fasteners required to install the **S-Type Awning Strap**

Tools & Items Required
Sika 552 AT or equivalent sealant
Centre Punch and Hammer
5mm Drill Bit & Cordless Drill
Rivet Gun

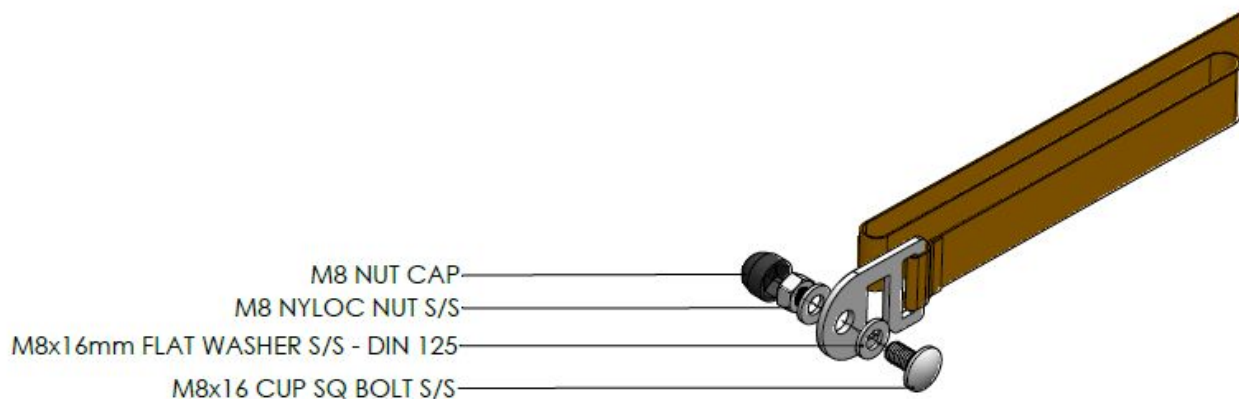
Fasteners Supplied	Qty
SEALED BLIND RIVET 4.8	4
M8 NUT CAP	1
M8 NYLOC NUT S/S	1
M8x16 FLAT WASHER S/S - DIN 125	2
M8x16 CUP SQ BOLT S/S	1

Lay out all parts provided on a table or flat surface, to ensure that all required parts are accounted for,

# Installation Instructions

STEP  
1

Install the supplied fasteners onto the Awning Strap End as illustrated below.

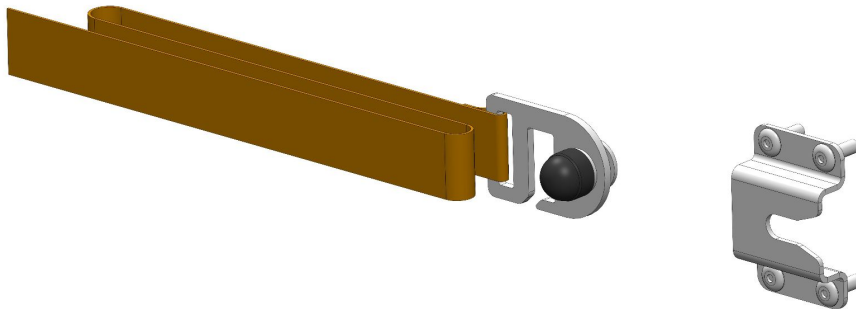


# Installation Instructions

STEP  
2

Open the Awning in order to identify a suitable fixing position for the Awning Strap Mount. Secure the Awning Strap that was pre-assembled in Step 1 to the Awning Arm at the Cam Buckle Strap. Identify a suitable mounting position for the Awning Strap Mount, where the Awning Strap can reach sufficiently.

The most effective orientation for the Awning Strap Mount is with the slot parallel to the Awning Strap, with the opening facing in the opposite direction of the Awning Strap.

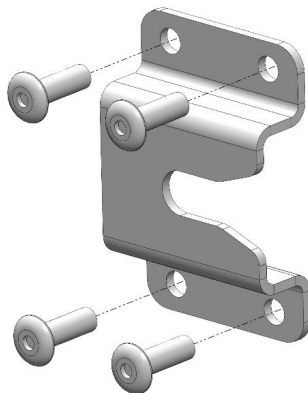


# Installation Instructions

STEP  
3

Once a suitable position has been identified for the Awning Strap Mount, use a centre punch and hammer to mark the necessary mounting points. Drill the corresponding 5mm holes. Apply Sika 552 AT to the back of the bracket, and install it with the 4 x SEALED BLIND RIVET 4.8.

Once installed, ensure that the Awning Strap can be secured as expected. **Let the Sika 552 AT cure for 48 Hours before placing under tension.**



# DISCLAIMER

---



All rights reserved. No part of this website may be reproduced, translated, stored in a retrieval system, or transmitted, in any form or by any means, electronic, mechanical, photocopying, recording or otherwise, without prior written permission of the owner.

**Review all instructions information carefully before installation.**

Any damages, direct or incidental to the installer and/or property due to incorrect installation of any parts are the responsibility of the installer. Due to the various applications and fitment options available, the responsibility lies with the user to ensure all mounting points are secure and tight before every trip.

If unsure, consult with your Distributor regarding the operations of our products.

Users are advised to be mindful of the load they are carrying and drive in accordance with road conditions.

## **WARNING**

Always wear appropriate PPE (Personal protection equipment) when fitting our products. Although the mounting kit is designed to be DIY, if you have any doubts or concerns, contact an accredited fitment centre to carry out the work. Alu-Cab will not be liable for any injury to persons, and/or damage to products and/or vehicles.

While Alu-Cab Holdings takes reasonable measures to ensure that the contents of this Website are accurate and complete, Alu-Cab Holdings makes no representations or warranties, whether express or implied, as to the quality, timeliness, operation, integrity, availability or functionality of this Website or as to the accuracy, completeness or reliability of any information on this Website. Alu-Cab Holdings reserves the right to make changes, corrections and/or improvements to the information and to the products and programs described in such information, at any time without notice.

Alu-Cab Holdings will use reasonable endeavours to maintain the availability of the Website, except during scheduled maintenance periods, and reserves the right to discontinue providing the Website or the service or any part thereof with or without notice to you. Any person who accesses this Website or relies on this Website or on the information contained in this Website does so at his or her own risk.

Occasionally, at our discretion, we may include or offer third-party products or services on our website. These third-party sites have separate and independent privacy policies. We therefore have no responsibility or liability for the content and activities of these linked sites. Nonetheless, we seek to protect the integrity of our site and welcome any feedback about these sites.