



FITMENT INSTRUCTIONS

Hercules Roof Conversion to Landcruiser 78 Series

DISCLAIMER

SIKA: PRELIMINARY INFORMATION

Alu-Cab recommends using Sika 552 AT. See the spec sheet [here](#).

Installation and fitment instructions include the tools required, fasteners included in the kit, and the hardware included in the kit.

Please follow the instructions and check the installation steps with the images in this document.

Alu-Cab recommends that all sealing work is allowed to cure for 24 hours after which you may drive the vehicle on normal paved roads. Before driving off-road with your Alu-Cab product or operating your roof conversion, an additional cure period of 48 hours is required.

Failure to follow these instructions will void your warranty. Please ensure that you follow the sealant manufacturer's curing time as per their technical data sheet. These times may differ slightly from the times we have recommended.



Service Enquiries email
queries@alu-cab.com

DISCLAIMER

Preliminary information

All rights reserved. No part of this document may be reproduced, translated, stored in a retrieval system. Or transmitted, in any form or by any means, electronic., mechanical, photocopying, recording or otherwise, without prior written permission of the owner.

Review all instructions information carefully before installation.

Any damages, direct or indirect to the installer and/or property due to incorrect installation of any parts are the responsibility of the installer. Due to the various application and firmment options available, the responsibility lies with the user to ensure all mounting points are secure and tight before every trip.

If unsure, consult with your Distributor regarding the operations of our products.

Users are advised to be mindful of the load they are carrying and drive in accordance with road conditions.

Installation Instructions

The tables below show the equipment, i.e. tools and fasteners required to start the Hercules roof conversion fitment onto a Landcruiser 78 series.

1.1

Tools & Items Required:

TOOLS
Ratchet/impact wrench
Nibbler
Adhesive applicator
Drill
Rivnut gun
Grinder
Star screwdriver
10,12,13 spanner
6mm Allen key
Plastic block
Hammer
Centre punch

ITEM
Turpentine
Cloth
Sika 552 AT
Masking tape
Rust preventative paint

Installation Instructions

1.2

Fasteners supplied: (Included with Hercules)

NB: The color of the vehicle images might vary as additional improvements have been made over time.

ITEM	QTY
M8 LF RIVNUT	4
M8X20 HEX BOLT SS	12
M8X24MM OVERSIZE WASHER SS	20
M8 NYLOC NUTS SS	8
M6 Spring Washers SS	4
M6X20 HEX BOLT SS	4
M6X12MM FLAT WASHER SS	4
M6 NUT CAP	4
M8 NUT CAP	4
M8 SPRING WASHER SS	4
BHD-M5x40 bolts	2

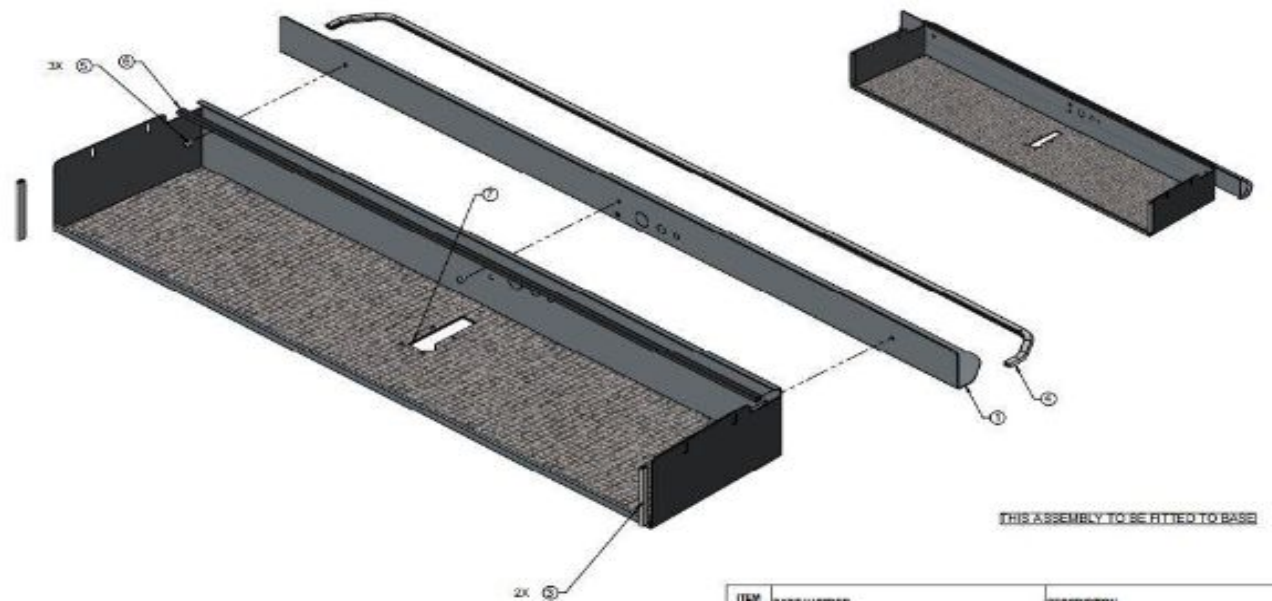
Installation Instructions

1..3

Hardware Required: (Included with Hercules)

ITEM	DESCRIPTION	QTY
322--HERC-RER-MNT-BRKT-01	REAR MOUNTING BRACKET	2
322-HERC-FNT-MNT-BRKT-01	FRONT MOUNTING BRACKET	2
322-CONSOLE-ASSY-01	CONSOLE ASSEMBLY	1
322-SID-COV-ASSY-01	SIDE COVER ASSEMBLY	1
322-HERC-CONS-LIGHT-COV-ASSY-01	HERCULES LIGHT COVER	1

Installation Instructions





Disclaimer



It is important to check for any leaks that may be occurring through the roof or door areas, before starting the roof conversion. This will ensure that you are aware of problem areas that may arise when the roof conversion is completed.

Installation Instructions

STEP 1:

Once you've checked the vehicle for any leaks, you can then set about preparing the vehicle by covering any areas inside the vehicle that may be susceptible to damage when removing the roof. Once all the parts are covered you can begin stripping the interior roof linings, seat belt mounts, and anything that may be attached or affected by the fact that you are about to remove the roof.



Installation Instructions

STEP 2:

Remove the light from the top hat stiffener(This light will be relocated to the console).



Installation Instructions

STEP 3:

Unbolt the A,B & C top hats



Installation Instructions

STEP 4:

Be sure that when removing all interior window linings, sun visors, mirror mounts etc, you store them in a safe place, as some of these parts will be re-installed during the installation of the Hercules roof conversion.



Installation Instructions



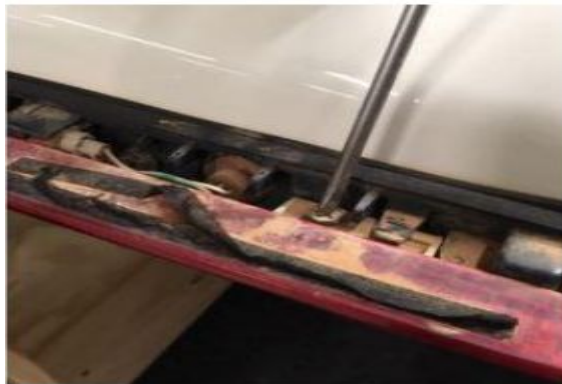
Installation Instructions

STEP 5:

Remove the rear brake light from the roof.



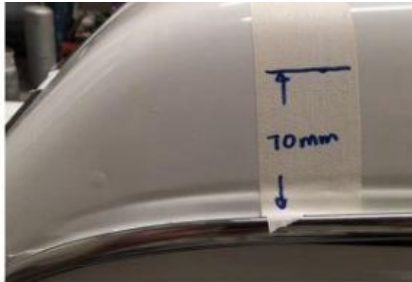
Installation Instructions



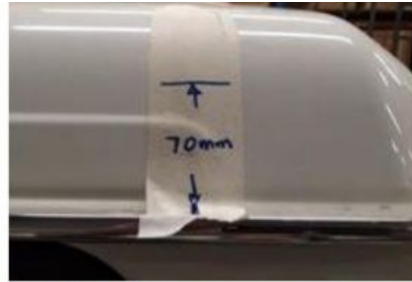
Installation Instructions

STEP 6:

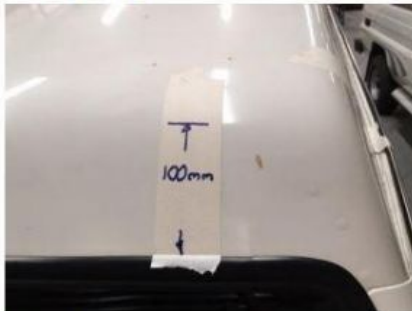
Measure and mark the roof 70mm along the sides and rear end of the vehicle and 100mm on the front side of the vehicle as seen below.



SIDE FRONT



SIDE BACK



FRONT



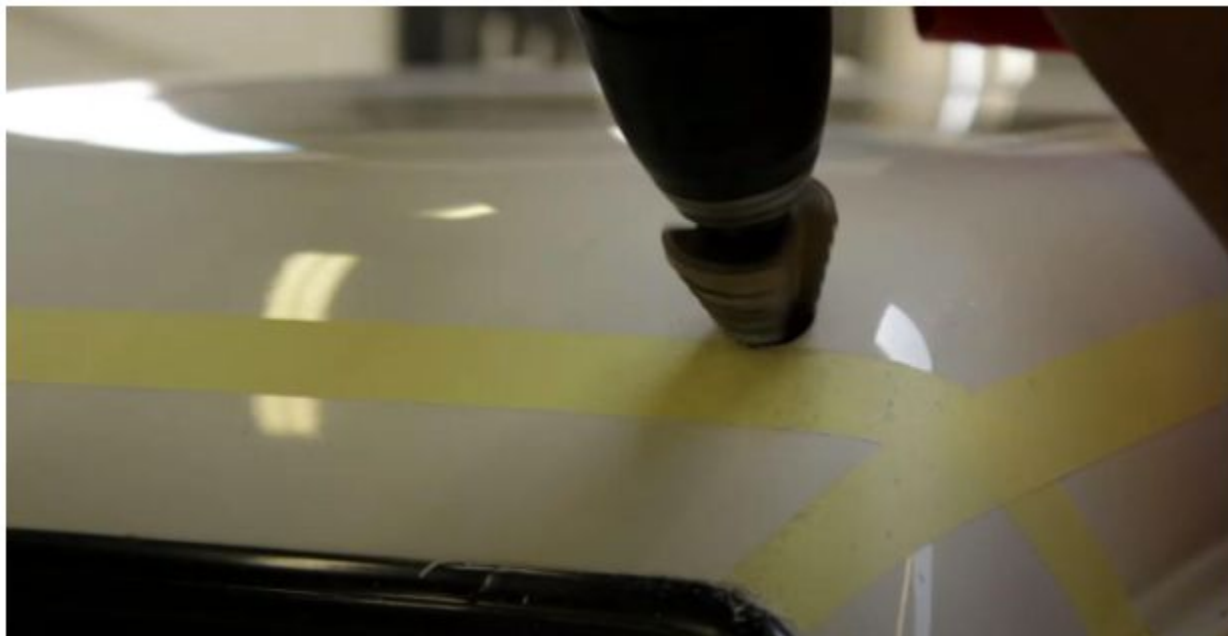
REAR



Installation Instructions

STEP 7:

You will then need to drill access holes at the corners of the roof so that you can use your Nibbler tool to cut the roof off.



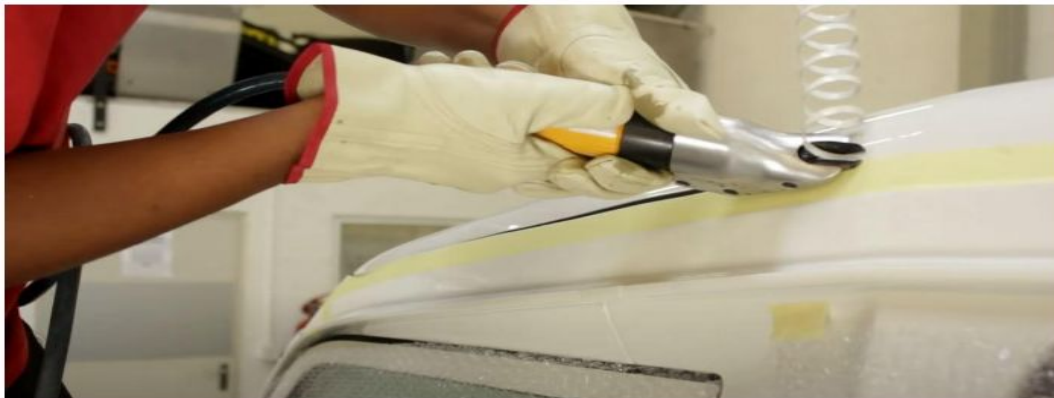
Installation Instructions

STEP 8 :

Once the holes has been drilled, you can now proceed to cut the roof off using the Nibbler tool as seen below.



Installation Instructions



Installation Instructions

STEP 9:

Now you can remove the roof.



Installation Instructions

STEP 10 :

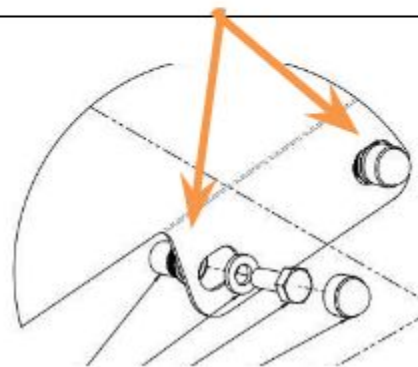
You will then need to drill the A-Top hat mount loose on the areas which are spot welded.



Installation Instructions



You will need to fit 2 x M6 Rivnuts to the two bottom holes on either side of the A-Top hat mount. These holes will be used to mount the side cover panels provided with the roof conversion.

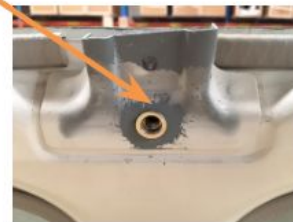


Installation Instructions

Mark and cut 20mm off from the top of the B & C top hat mounts as seen below.



Drill the bottom holes of the B & C top hat mounting points, and fit with the M8 rivnuts supplied in the kit.



Installation Instructions

STEP 11 :

You may now proceed to fit the mounting brackets supplied in the kit at the B & C top hat mounting points as seen below.



Installation Instructions

Apply a rust preventive paint to the roof along the section which has been removed.



Installation Instructions

STEP 12 :

Dry fit the roof conversion into position, using two bars to balance the conversion on top of the vehicle. This will help you to make the necessary markings for the mounting kit.



Installation Instructions

Mark your holes positions and drill out the holes on the base mounting plate.



Installation Instructions

Apply Sika 552AT all the way around the inside lower edge of the roof conversion.



Installation Instructions

Lower the roof into position.



Installation Instructions

Clamp down the roof on the rear and sides of the vehicle for a proper seal. Bolt the mounting brackets to the vehicle and base and tighten as seen below.



Installation Instructions

Once the Roof conversion is bolted down, Seal around the outside edges with either Sikaflex 552AT or Sikaflex 521UV.



Installation Instructions



Installation Instructions

STEP 13:

Remove the bottom bolts from the throw over latches and drill through the vehicle roof to secure the bottom bolts into place. (2x BHD-M5x40 bolts) are supplied to replace the shorter bolts at the bottom of each latch



Installation Instructions

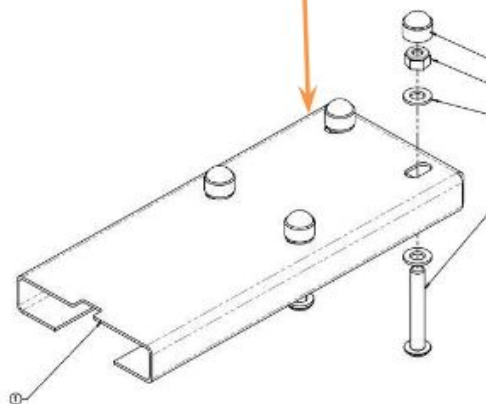
STEP 14:

Prepare the existing roof light wire for soldering and extend the wire to reach the console and fit the OEM light which was removed from the B top hat to Hercules console as seen in the images below.



Installation Instructions

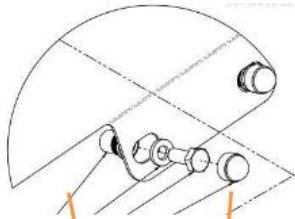
Use the bolts supplied to fit the OEM
light into the console.



Installation Instructions

STEP 15:

The final part of the fitment is to fit the two side panels supplied in the kit. There is a left side panel and a right side panel fitted with rubber and foam to prevent these parts from rattling.



NB: Alu-Cab recommends that all sealing work is allowed to cure for 24 hours, after which you may drive the vehicle on normal paved roads. Before driving off-road with your Alu-Cab product or operating your roof conversion, an additional cure period of 48 hours is required.

By now you should have successfully fitted your Landcruiser Hercules Roof Conversion.

All that's left to do is pull the vehicle outside, pop open your new roof, fit the spring poles and see how well your new roof conversion works.

Installation Instructions



Disclaimer

WARNING

Always wear appropriate PPE (Personal protection equipment) when fitting our products. Although the mounting kit is designed to be DIY, if you have any doubts or concerns, contact an accredited fitment centre to carry out the work. Alu-Cab will not be liable for any injury to persons, and/or damage to products and/or vehicles.

While Alu-Cab Holdings takes reasonable measures to ensure that the contents of this Website are accurate and complete, Alu-Cab Holdings makes no representations or warranties, whether express or implied, as to the quality, timeliness, operation, integrity, availability or functionality of this Website or as to the accuracy, completeness or reliability of any information on this Website. Alu-Cab Holdings reserves the right to make changes, corrections and/or improvements to the information and to the products and programs described in such information, at any time without notice.

Alu-Cab Holdings will use reasonable endeavours to maintain the availability of the Website, except during scheduled maintenance periods, and reserves the right to discontinue providing the Website or the service or any part thereof with or without notice to you. Any person who accesses this Website or relies on this Website or on the information contained in this Website does so at his or her own risk.

Occasionally, at our discretion, we may include or offer third-party products or services on our website. These third-party sites have separate and independent privacy policies. We therefore have no responsibility or liability for the content and activities of these linked sites. Nonetheless, we seek to protect the integrity of our site and welcome any feedback about these sites.