

CANOPIES

Safety and shelter are critical aspects to living life on the road. In more ways than one, a good canopy should combine these elements in a way that is not only easy to use, but also adaptable to change.

Back in the 1990s, when we started building the first-ever aluminium adventure canopies, we knew from our own travel experience that three factors are vital to the success of vehicle-based travel and/or overland equipment. These are weight, strength and versatility.

The trick is to find a solution that offers the best combination of all three. Until engineers start building passenger planes out of fibreglass or stainless steel, we're going to stick with the material that offers the best possible (and most economical) strength-to-weight ratio: Aluminium.

But, aside from the obvious strength / weight benefits, we favour aluminium for its unsurpassed corrosion-resistance, its UV stability, its repair-ability, and its flexibility – essential qualities in any off-road environment.



CHOOSE YOUR MODEL:

CONTOUR CANOPY



With Side Windows



With Solid Doors

TECHNICAL FEATURES

| | |
|------------------|--|
| FINISH | Powder - Coated Black |
| SLEEK NEW DESIGN | Rigid formed roof panel. |
| LIGHTING | Integrated brake light & 3 internal LED lights. |
| SEAL | Double door seal design with superior weather and dust proofing. |
| DOORS | Centre flex, water proof hinges - prevents rain water dripping in when door is open. - Full length side doors for full access on DC Canopies. |
| LOCKS | Reliable, tamper-proof and keyed alike. |
| GLASS | Automotive safety glass, E-marked. |
| WEIGHT | Approx. 57kgs for the Contour Canopy without side windows and 62kgs with side windows. |
| GAS STRUTS | High quality units made in Germany. |
| REINFORCED ROOF | Max Load: Dynamic 200kg* & Static 400kg* Mounting Rail fitted on canopy roof as standard. Can be used with M8 cup square bolts, tie down rings etc. |
| WINDOWS | Optimised rear window for maximum visibility. Front & Side windows come standard with sliders |
| VENTILATION | Front mounted positive pressure vent. |
| WATERPROOF | Canopy is waterproof. |

*STATIC LOAD CAPACITY:

The static load capacity is the maximum recommended load which can be applied while the vehicle is stationary. For example, a parked vehicle with a Roof Top Tent and accessories (awning, shower cube, load bars etc) with people inside could weigh up to 300kg / 660Lbs (The average human weight according to global statistics is 73Kg's / 160Lbs.).

Static load rating assumes that the product is able to support this, but it does not indicate that the same weight can be carried while the vehicle is moving either on-road or off-road.

*DYNAMIC LOAD CAPACITY:

A dynamic load capacity refers to the maximum weight that can be supported by a mounting structure when it is subjected to movement, such as when a vehicle is driving.

This rating will normally be lower than a static load capacity because the amount of force applied when doing so is far greater than when the vehicle is stationary.

Ideally a dynamic load rating excludes any people within a roof top tent.

CHOOSE YOUR MODEL:



ADVENTURE CANOPY

Rear door is 900mm wide.



EXPLORER CANOPY

Full width rear door, allows full access to load bay

FINISH

Powder - Coated **Black**



Tread - Available in black



Smooth - Available in black

SLEEK NEW DESIGN Our canopies are CAD designed to ensure consistency and quality.

FRAME Tig welded aluminium extrusions.

PANELS Aluminium sheet CNC laser-cut and bent.

DOORS Centre flex, water proof hinges - prevents rain water dripping in when door is open. - Full length side doors for full access on DC Canopies.

LOCKS Reliable, tamper-proof and keyed alike.

GLASS Automotive safety glass, E-marked.

WEIGHT Approx. 57 kg for DC Canopy one of the lightest canopies of its kind, two people can easily lift it onto the load bin.

FITMENT No-drill fitment on most modern vehicles. Fitment brackets fasten to manufacturer's load points on the load bin. Recommended fitment time 20 - 30 minutes by one person.

GAS STRUTS High quality units made in Germany.

REINFORCED ROOF Max Load: **Dynamic 200kg*** & **Static 400kg***
Mounting Rail fitted on canopy roof as standard. Can be used with M8 cup square bolts, tie down rings.

READY TO FIT The canopy is delivered ready to fit to the vehicle, no need to assemble.

WATERPROOF Canopy is waterproof.

FORD RANGER T6 2012+

Available in **Double**, **Extra** and **Single** Cab

FORD RANGER 2022+

Available in **Double** Cab

CHEVY COLORADO 2017+

Available in **Double** Cab

ISUZU KB 2013+

Available in **Double** and **Extra** Cab

ISUZU 2020

Available in **Double** and **Extra** Cab

JEEP GLADIATOR

Available in **Double** Cab

MERCEDES BENZ X CLASS

Available in **Double** Cab

MITSUBISHI TRITON 2016+

Available in **Double** and **Extra** Cab

NISSAN NAVARA D40

Available in **Double** and **Extra** Cab

NISSAN NAVARA NP300 (2015 - 2020)

Available in **Double** (and **EU DC**) and **Extra** Cab (and **EU XC**)

HILUX VIGO 2005+

Available in **Double** and **Extra** Cab

HILUX REVO 2016+

Available in **Double**, **Extra** and **Single** Cab

LAND CRUISER 79

Available in **Double** and **Single** Cab

VW AMAROK 2010+

Available in **Double** Cab

VW AMAROK 2023+

Available in **Double** Cab

TOYOTA TACOMA GEN2

Available in **Long** Bed and **Short** Bed (2005+)

TOYOTA TACOMA GEN3 2016+

Available in **Long** Bed and **Short** Bed

GWM P-SERIES

Available in **Double** Cab



Single Cab



Double Cab

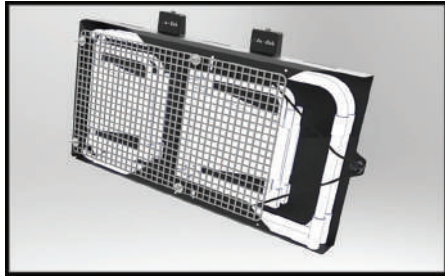


Extra Cab



CANOPY ACCESSORIES

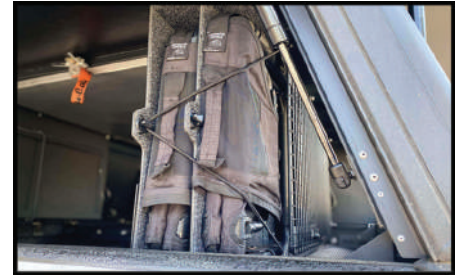
AVAILABLE FOR THE **EXPLORER, ADVENTURE & CONTOUR** CANOPY



2 Chair Carrier



Side Prep Table



4 Chair Carrier



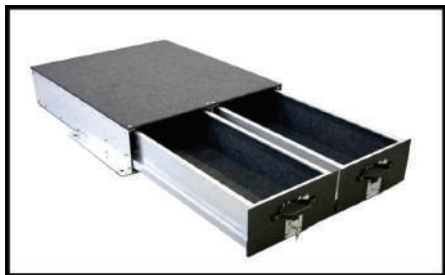
Ammo Box Slide



Canopy Table Bracket



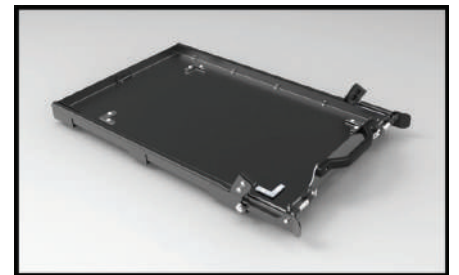
Alu - Table



Drawer System



Load Bars



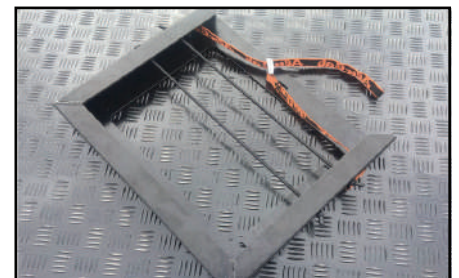
Tilting Fridge Slide - FS1, FS2, FS3 & FS4



Roof Rack Tray



Roof Rack Tray with Table Bracket



Braai Grid Holder



Canopy Cupboards



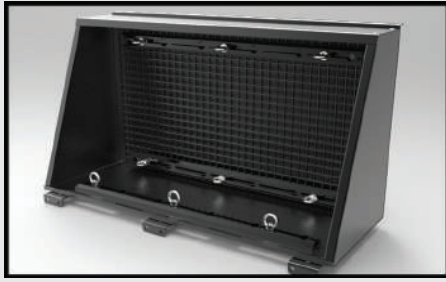
Molle Plate for 1250mm Cupboard



Molle Plate for 560mm Cupboard

All bolt-on to canopy with no drilling fitment kits.

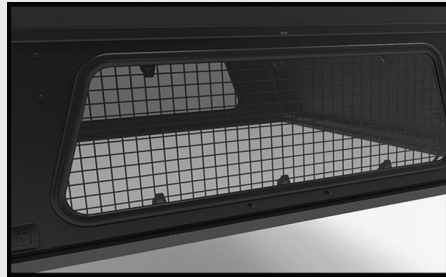
EXPLORER & ADVENTURE CANOPY EXCLUSIVE ACCESSORIES



Recovery Kitting for Cupboard



Kitchen Kitting for Cupboard



Security Window Grid



Push Button Lock Cover

CONTOUR CANOPY EXCLUSIVE ACCESSORIES



Contour Canopy Kitchen Kit



Contour Canopy Kitchen Table



Contour Canopy Security Window Grid



FORD RANGER T6 2012+

Available in **Double** and **Extra** Cab

FORD RANGER 2022+

Available in **Double** and **Extra** Cab

ISUZU DMAX 2020

Available in **Double** Cab

JEEP GLADIATOR 2019+

Available in **Double** Cab

NISSAN NAVARA NP300 ZA 2015 - 2020

Available in **Double** Cab

NISSAN NAVARA NP300 EU 2015 - 2020

Available in **Double** Cab

TOYOTA HILUX REVO 2016+

Available in **Double** and **Extra** Cab

VW AMAROK 2010+

Available in **Double** Cab

VW AMAROK 2023+

Available in **Double** Cab

MITSUBISHI TRITON 2016+ (Excluding Athlete Model)

Available in **Double**

TOYOTA TACOMA GEN3 2016+

Available in **Long** Bed and **Short** Bed



Alu-Cab™

ULTIMATE OVERLAND PRODUCTS

